

OREGON CORNER RESTORATION FORM

X-11

Section 33 Township 4N Range 29E

County Umatilla Date 4/25/96

CORNER DESIGNATION

C 1/4

- Condition Report Only
- Not Found
- Renewed
- Unrecorded
- Surveyed In
- Referenced Out

Previous Renewals/Surveys, etc. CS #94-127-C shows brass cap set; none was found.

Monument(s) & Accessories Found: (Condition and Source)

None.

Monument Detail

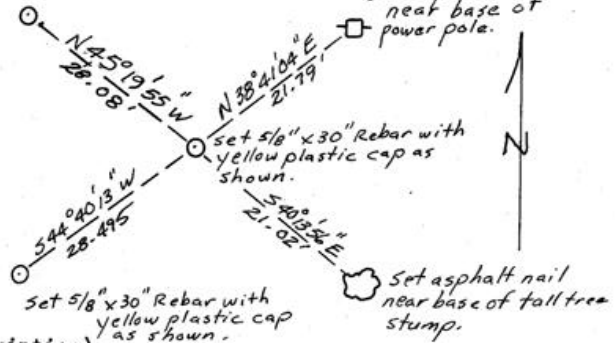
set 5/8" x 30" rebar with yellow plastic cap as shown.

Sketch

Set asphalt nail near base of power pole.



Yellow Plastic Cap (1 1/4" Diameter) On 5/8" x 30" Rebar



Monument Set (Procedures and Description)

Set 5/8" x 30" rebar 4" beneath gravel road surface with yellow plastic cap marked as shown above. Monument was set by traversing through opposite 1/4 corners and intersecting lines between them.

New Accessories

5/8" x 30" Rebars were set in the northwest and southwest quadrants at the county road right of way intersection lines. Asphalt nails were set in the accessories shown above and bearings and distances shown are to those nails. All accessories have bearing object tags on or near them. The two iron rebars also have "Do Not Disturb" signs on a metal fence post near them.

Location & Comments

From the intersection of U.S. Highway 395 and East Harding Avenue in Stanfield, go east approximately 1.1 miles to the intersection of East Harding and North Ash roads. Monument is set approximately 4" beneath gravel in intersection.

Compass Declination N/A - See survey map for base.
 Firm/Agency Umatilla County Department of Public Works
 Address 3920 Westgate Pendleton, Oregon 97801
 Party Chief Gary Roberts
 Notes Gary Roberts
 Witness Charlie Good

Surveyor's Seal

REGISTERED PROFESSIONAL LAND SURVEYOR

Dary R. Roberts
OREGON
JULY 20, 1993
GARY R. ROBERTS
2627

Renews 12/31/96

RECEIVED BY

Umatilla County Surveyor

Date 6-26

Read By RR

No. 96-11-R