

CORNER RESTORATION FORM

Township 4N,3N Range 28E, 29E Section 1,6,31,36 County UMATILLA

State OREGON Date 3/30/2023 Number Z-1

Condition Report Only

Corner Designation : SECTION CORNER: 1, 6, 31, 36

Not Found
 Renewed

Previous Renewals ORIGINAL SOURCE OF CORNER

Surveied In
 Referenced

ORIGINALLY SURVEYED IN 1859 BY GATES HE SET A STAKE
IN MOUND OF EARTH

MONUMENT DETAIL

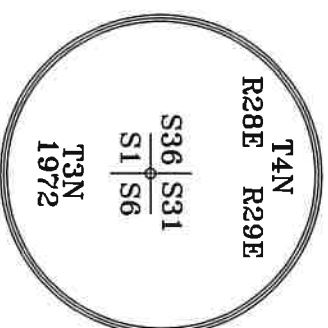
1972 STAEBLER SET A 3" BRASS CAP IN CONCRETE, COUNTY

Found Set

SURVEY NO. H-107-B

BASIS OF BEARINGS, NAD 83/91 OREGON STATE PLANE
COORDINATES NORTH ZONE:

NORTHING: 771811.80
EASTING: 8521408.40



Monument & Accessories Set/Found (Procedure and Description)

AT CORNER FOUND A 3' BRASS CAP 1/2" BELOW ASPHALT IN CONCRETE, COUNTY SURVEY NO. H-107-B

FOUND A ALUMINUM TAG 951 ON POWER POLE & SET UMATILLA MON. SIGN S 59°34' W 46.51', CORNER FORM

Z1-95-60-B

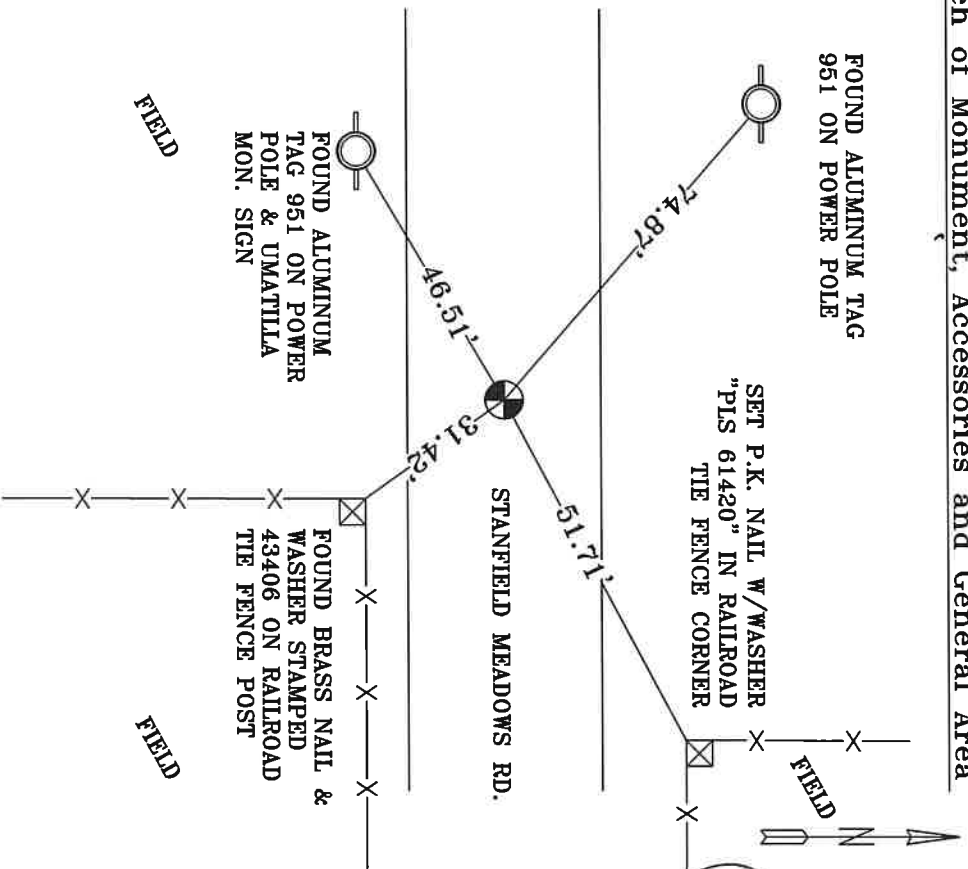
FOUND A NAIL & WASHER STAMPED 43406 ON RAILROAD THE FENCE POST S 35°37' E 31.42', CORNER FORM NO.

Z1-09-11-R & Z1-11-008-R

FOUND A ALUMINUM TAG 951 ON POWER POLE N 49°00' W 74.87', CORNER FORM NO. Z1-95-60-B

SET A P.K. NAIL W/WASHER "PLS 61420" IN RAILROAD THE FENCE CORNER N 62°15' E 51.71'

Sketch of Monument, Accessories and General Area



**REGISTERED
PROFESSIONAL
LAND SURVEYOR**

Jane King
**OREGON
MAY 10, 2011
LANCE CLARK KING
61420**

RENEWALS: 6/30/2023

Agency:

CK3, LLC
945 W. ORCHARD
HERMISTON OREGON 97838
OFFICE: 541-567-2345
FAX: 541-567-2305
WEB: CK3LLC.NET
Field Book # 0-350

COUNTY SURVEYOR
RECORDING INFO

Received CT

Filed 5/4/23

Survey No. 23-042-C

Drawing No. _____

Index No. Z-1