

OREGON CORNER RESTORATION FORM

Section 31 Township 4N Range 29E

Z-1

County UMATILLA Date 3/95

CORNER DESIGNATION

SW Cor

- Condition Report Only
- Not Found
- Renewed
- Unrecorded
- Surveyed In
- Referenced Out

Previous Renewals/Surveys, etc. ORIG SUR. by GATES 1859 cont. #87  
He set post in mound. Staebler set 3" BC. in Conc  
1972 sur. # H-107-B

Monument(s) & Accessories Found: (Condition and Source)

Found 3" BC. in Conc stamped as Below

Monument Detail

Sketch



Monument Set (Procedures and Description)

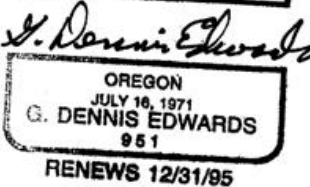
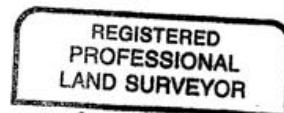
New Accessories

Alum tag #951 in P. Pole Bears N 48° 10' 10" W 75.00 Ft  
Alum tag #951 in RR. tie F. Post " N 71° 58' E 73.97 Ft  
Alum tag #951 in " " " S 34° 27' 50" E 31.47 Ft.  
" " " P. Pole " S 60° 39' 10" W 46.46 Ft.

Location & Comments

From Intersection Compass Declination \_\_\_\_\_  
Ecto Meadows Rd Firm/Agency EDWARDS  
with Umatilla Meadows SURVEYING  
Rd. Go W. 1/2 Mile Address P.O. Box 763  
To Cor on Umatilla HERMISTON, OR 97838  
Meadows Rd. Party Chief D. Edwards

Surveyor's Seal



RECEIVED BY  
Umatilla County Surveyor

Date \_\_\_\_\_

Rec'd By \_\_\_\_\_

No. 95-60-B

Notes \_\_\_\_\_

Witness J. Coppock