

OREGON CORNER RESTORATION FORM

SECTION 4.33 TOWNSHIP 4 & 3 NORTH RANGE 29 EAST Z-11
 COUNTY : UMATILLA DATE 01/02

CORNER DESIGNATION

1/4 CORNER

CONDITION REPORT ONLY

- NOT FOUND
- RENEWED
- UNCOVERED
- SURVEYED IN
- REFERENCED

PREVIOUS RENEWALS / SURVEYS, ETC.

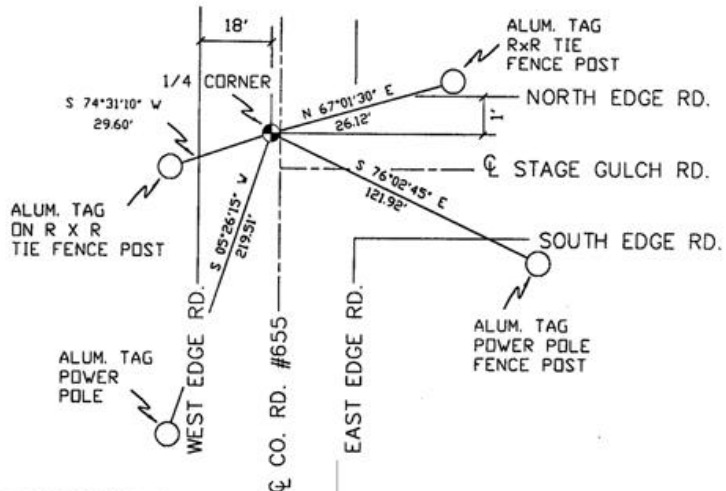
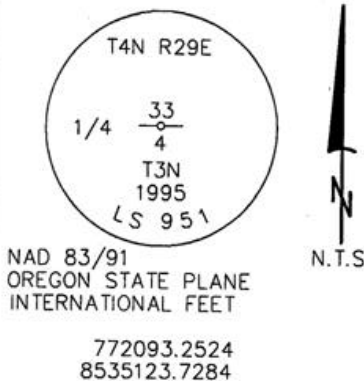
ORIGINALLY SURVEYED IN 1859 BY GATES UNDER CONTRACT #84. HE SET A POST IN A MOUND OF EARTH.
 IN 1995 EDWARDS SET A 1" x 30" IRON PIPE WITH A 2 3/8" BRASS CAP STAMPED AS BELOW, BY SINGLE PROPORTION.

MONUMENTS AND ACCESSORIES FOUND: CONDITION AND SOURCE

AN ALUMINUM TAG #951 ON A R X R TIE FENCE POST LIES S 74°31'10" W, 29.60 FEET.
 AN ALUMINUM TAG #951 ON A POWER POLE LIES S 05°26'15" W, 219.51 FEET.
 AN ALUMINUM TAG #951 ON A R X R TIE FENCE POST LIES N 67°01'30" E, 26.12 FEET.
 AN ALUMINUM TAG #951 ON A POWER POLE FENCE POST LIES S 76°02'45" E, 121.92 FEET.

MONUMENT DETAIL

SKETCH



MONUMENT SET (PROCEDURES AND DESCRIPTION)

NEW ACCESSORIES FROM WHICH

LOCATION AND COMMENTS

AT INTERSECTION OF COUNTY RD. # 655 AND OLD STAGE GULCH RD.

COMPASS DEC.

FIRM/AGENCY
 PRIMM LAND SURVEYING
 P.O. BOX 1322
 HERMISTON, OREGON 97838

PARTY CHIEF
 KEITH P. PRIMM

NOTES

WITNESS
 BRIT L. PRIMM

RECEIVED BY

Umatilla County Surveyor

Date 2-02

Rec'd By KK

No. 02-49-g

SURVEYOR'S SEAL

REGISTERED
 PROFESSIONAL
 LAND SURVEYOR

Brit L. Primm
 OREGON
 JULY 13, 1999
 BRIT L. PRIMM
 48509

EXPIRATION DATE: 12/31/02