

OREGON CORNER RESTORATION FORM

SECTION 33,34,3,4 TOWNSHIP 4&3 NORTH RANGE 29 EAST Z-13
 COUNTY : UMATILLA DATE 11/01

CORNER DESIGNATION

SECTION CORNER

- CONDITION REPORT ONLY
 NOT FOUND
 RENEWED
 UNCOVERED
 SURVEYED IN
 REFERENCED

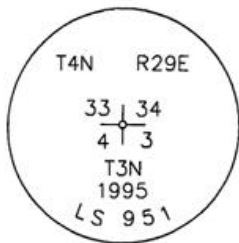
PREVIOUS RENEWALS / SURVEYS, ETC.

ORIGINALLY SURVEYED IN 1859 BY GATES UNDER CONTRACT #84. HE SET A POST IN A MOUND OF EARTH.
 IN 1995 EDWARDS SET A 5/8" x 30" IRON PIPE WITH A 2" ALUM. CAP.

MONUMENTS AND ACCESSORIES FOUND: CONDITION AND SOURCE

CENTER OF A 5" FIR TREE BEARS N 37°41'32" E, 28.90 FEET.
 AN ALUMINUM TAG #951 ON A POWER POLE LIES N 21°45'18" W, 38.72 FEET.
 AN ALUMINUM TAG #951 ON A POWER POLE LIES S 22°25'17" W, 17.56 FEET.
 A 1" x 30" IRON ROD WITH A 2 3/8" BRASS CAP MKD "#951" LIES S 0°01'48" W, 16.96 FEET.

MONUMENT DETAIL

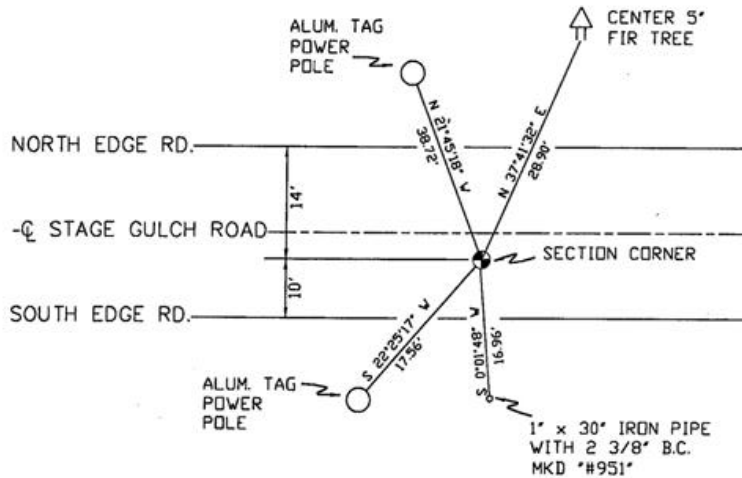


N.T.S.

NAD 83/91
 OREGON STATE PLANE
 INTERNATIONAL FEET

772166.2632
 8537749.3933

SKETCH



MONUMENT SET (PROCEDURES AND DESCRIPTION)

NEW ACCESSORIES FROM WHICH

RECEIVED BY

Umatilla County Surveyor

Date 12-01

Rec'd By KK

No. 01-213-9

LOCATION AND COMMENTS

FROM INTERSECTION OF EDWARDS ROAD WITH OLD STAGE GULCH ROAD GO EAST 1 MILE TO COR.

COMPASS DEC.

FIRM/AGENCY
 PRIMM LAND SURVEYING
 P.O. BOX 1322
 HERMISTON, OREGON 97838

PARTY CHIEF
 KEITH P. PRIMM

NOTES

WITNESS
 BRIT L. PRIMM

SURVEYOR'S SEAL

REGISTERED
 PROFESSIONAL
 LAND SURVEYOR

Brit L. Primm
 OREGON
 JULY 13, 1999
 BRIT L. PRIMM
 48509

EXPIRATION DATE:12/31/02