

OREGON CORNER RESTORATION FORM

Section 3 Township 3N Range 29E
 County Umatilla Date: 05-09-02

Corner Designation: 3N29A15

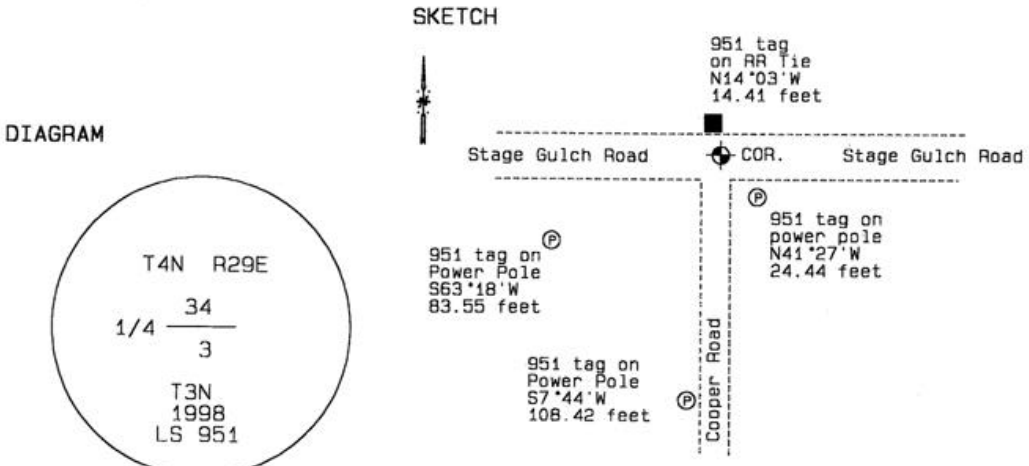
Condition Report Only
 Not Found
 Remonumented
 Unrecorded
 Surveyed In
 Referenced Out

Previous Renewals / Surveys, etc.

Monument set by survey 98-213-C.

Monument and Accessories Found: (condition and source)

Found the 2 1/2" brass capped monument in good condition stamped as shown in the diagram.



MONUMENT (S) AND ACCESSORIES SET (Procedures and Description)

None.

REFERENCES SET:

None.

Made GPS tie to TRI Station Echo.	Oregon State Plane Coord. - North Zone
Latitude 45°46'37.73221"N	Northing 772216.94
Longitude 119°10'26.56160"W	Easting 8540402.71
NAD 83(1991)	Ortho Height 705.90
	Ellipsoidal Height 636.40

Location and Comments

Compass Declination
20°E

Surveyors Seal

From junction of S. Ash Road and Stage Gulch Road, go east 1.0 mile.

REGISTERED
PROFESSIONAL
LAND SURVEYOR

RECEIVED BY:

Firm / Agency

David L. Haddock

Date: 6-02
 Rec'd By: RK
 No. 02-149-9

Haddock Surveying
 P. O. Box 1574
 Pendleton, OR 97801
 (541) 276-2174

OREGON
 JULY 12, 1968
 DAVID L. HADDOCK
 852

RENEWS 6-30-03