

CORNER RESTORATION FORM

Township 3N, 4N Range 29E Section 4, 33 County UMATILLA

State OREGON Date 3/30/2023 Number Z-15

Corner Designation : 1/4 CORNER: 3, 34

Condition Report Only

Not Found

Renewed

Surveyed In

Referenced

MONUMENT DETAIL

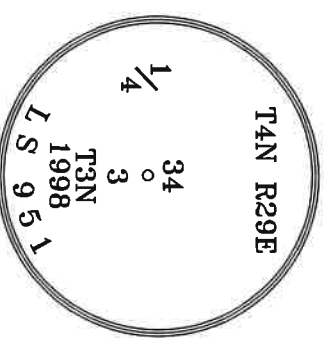
Found Set

Previous Renewals ORIGINAL SOURCE OF CORNER
 ORIGINALLY SURVEYED IN 1859 BY GATES HE SET A POST
 IN MOUND OF EARTH
 1998 EDWARDS SET A 1"X30" I.P. W/ 2-3/8" B.C. BY SINGLE
 PROPORTION, COUNTY SURVEY NO. 98-213-C & CORNER FORM
 NO. Z15-98-213-C

T4N R29E

BASIS OF BEARINGS, NAD 83/91 OREGON STATE PLANE
 COORDINATES NORTH ZONE:

NORTHING: 772230.31
 EASTING: 8540398.98



Monument & Accessories Set/Found (Procedure and Description)

AT CORNER FOUND A 2 3/8" BRASS CAP 1' BELOW GRADE, COUNTY SURVEY NO. 98-213-C & CORNER FORM NO. Z15-98-213-C

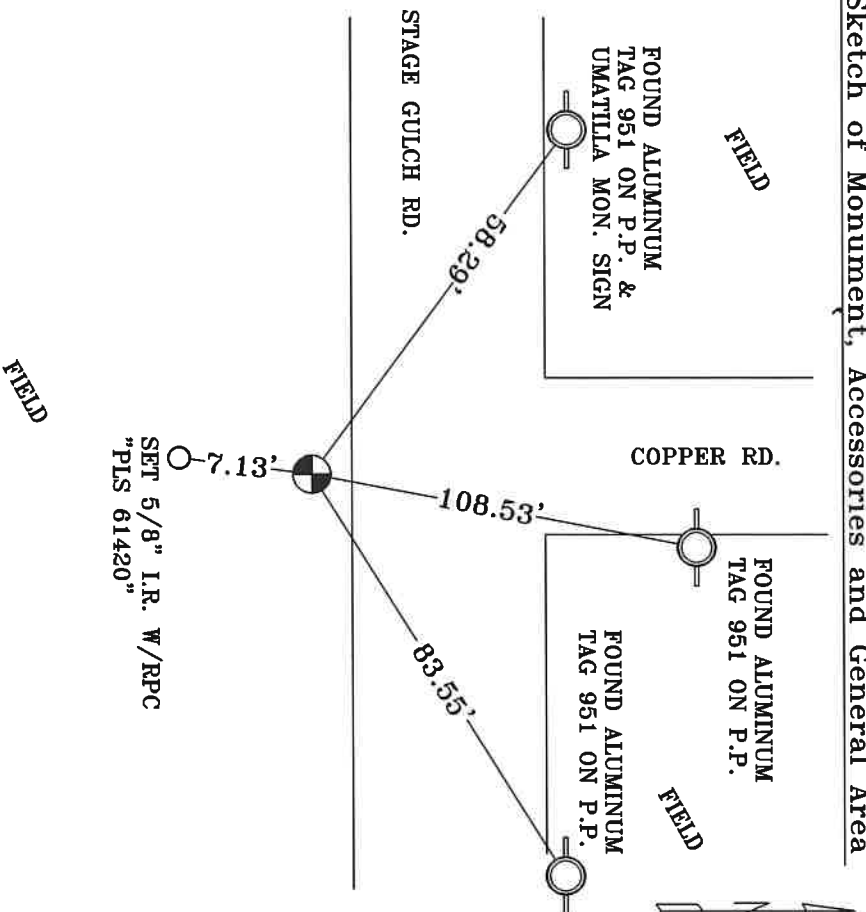
FOUND A ALUMINUM TAG 951 IN POWER POLE N 06°44' E 108.53', CORNER FORM NO. Z15-98-213-C

FOUND A ALUMINUM TAG 951 IN POWER POLE N 62°12' E 83.55', CORNER FORM NO. Z15-98-213-C

FOUND A ALUMINUM TAG 951 IN POWER POLE & SET UMATILLA MON. SIGN N 63°53' W 58.29', CORNER FORM NO. Z15-98-213-C

SET 5/8" I.R. W/RPC "PLS 61420" 2" BELOW GRADE S 05°54' W 7.13'

Sketch of Monument, Accessories and General Area



**REGISTERED
PROFESSIONAL
LAND SURVEYOR**

OREGON
MAY 10, 2011
LANCE CLARK KING
61420

RENEWALS: 6/30/2023

Agency: **CK3, LLC**
 945 W. ORCHARD
 HERMISTON OREGON 97838
 OFFICE: 541-567-2345
 FAX: 541-567-2305
 WEB: CK3ILC.NET
 Field Book # 0-350

COUNTY SURVEYOR
RECORDING INFO

Received CT

Filed 5/4/23

Survey No. 23-042-C

Drawing No. _____

Index No. Z-15