

OREGON CORNER STORAGE FORM

Section 2
County Umatilla

Township 3N
Date: 12/31/08

Range 29E

Corner Designation: 3N29A19

1/4 corner common to sections 35, T4NR29E, 2, T3NR29E.

- Condition Report Only
- Not Found
- Remonumented
- Unrecorded
- Surveyed In
- Referenced Out

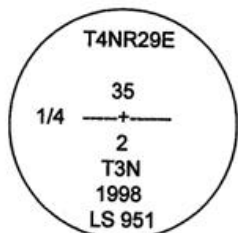
Previous Renewals / Surveys, etc.

Originally Surveyed by Gates in 1859. He set a post in a mound of earth.
In 1998 Edwards set a 1"x30" Iron pipe with a 2 3/8" B.C. by single proportion.
In 2001 Primm found a 2 3/8" B.C.
In 2002 Haddock found a 2 1/2" B.C.

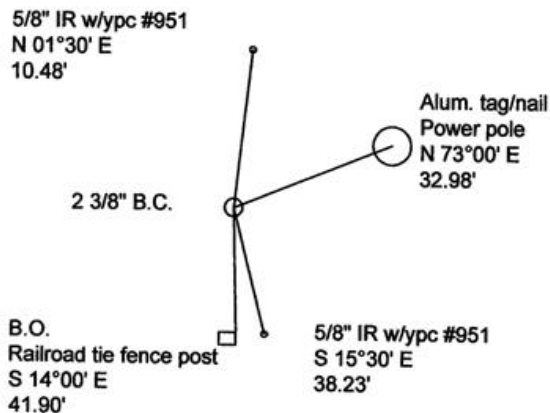
Monuments and Accessories Found: (Condition and Source)

A 2 3/8" B.C.
A 5/8" Iron rebar w/ ypc #951 lies N 01°30' E, 10.48'.
An aluminum tag #951 and nail on a power pole lies N 73°00' E, 32.98'.
A 5/8" Iron rebar w/ ypc #951 lies S 15°30' E, 38.23'.
A B.O. sign on a railroad tie fence post lies S 14°00' E, 41.90'.

Diagram



Sketch



NAD 83/91
OREGON STATE PLANE NORTH
INTERNATIONAL FEET

N 772363.423
E 8545692.703

LAT - 45° 46' 38.31437" N LON - 119° 09' 11.89925" W

Monument (s) Set (Procedures and Description)

None.

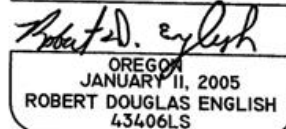
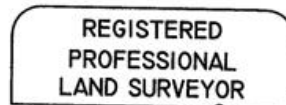
References Set:

Location and Comments

The corner lies approx. 2 miles east of the intersection of S. Ash Rd. and Stage Gulch Rd.

Compass Declination
17° E

Surveyors Seal



RENEWAL DATE: 12/31/09

RECEIVED BY:

Date: 1-09
Rec'd By: KK
No. 09-19-R

Firm / Agency

Survey One, LLC.
P.O. Box 382
Pendleton, OR 97801
(541) 276-2055