

OREGON CORNER RESTORATION FORM

SECTION 35,36,1,2 TOWNSHIP 4&3 NORTH RANGE 29 EAST Z-21
 COUNTY : UMATILLA DATE 11/01

CORNER DESIGNATION
 SECTION CORNER

CONDITION REPORT ONLY
 NOT FOUND
 RENEWED
 UNCOVERED
 SURVEYED IN
 REFERENCED

PREVIOUS RENEWALS / SURVEYS, ETC.

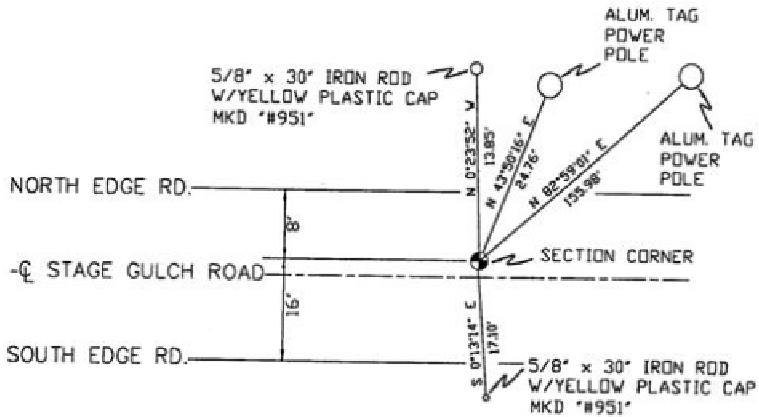
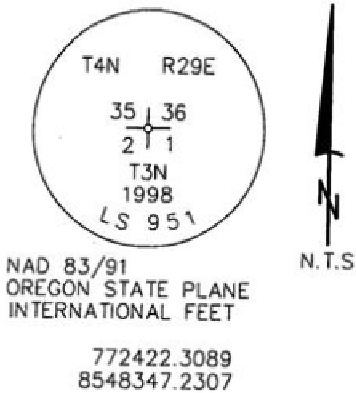
ORIGINALLY SURVEYED IN 1859 BY GATES UNDER CONTRACT #84. HE SET A POST IN A MOUND OF EARTH.
 IN 1998 EDWARDS SET A 1" x 30" IRON PIPE WITH A 2 3/8" BRASS CAP BY SINGLE PROPORTION.

MONUMENTS AND ACCESSORIES FOUND: CONDITION AND SOURCE

AN ALUMINUM TAG #951 ON A POWER POLE LIES N 43°50'16" E, 24.76 FEET.
 AN ALUMINUM TAG #951 ON A POWER POLE LIES N 82°59'01" E, 155.98 FEET.
 A 5/8" x 30" IRON ROD WITH A YELLOW PLASTIC CAP MKD #951 LIES N 0°23'52" W, 13.85 FEET.
 A 5/8" x 30" IRON ROD WITH A YELLOW PLASTIC CAP MKD #951 LIES S 0°13'14" E, 17.10 FEET.

MONUMENT DETAIL

SKETCH



MONUMENT SET (PROCEDURES AND DESCRIPTION)

NEW ACCESSORIES FROM WHICH

LOCATION AND COMMENTS

WEST 1/2 MILE FROM LARGE POWER LINE IN OLD STAGE GULCH ROAD.

COMPASS DEC.

FIRM/AGENCY

PRIMM LAND SURVEYING
 P.O. BOX 1322
 HERMISTON, OREGON 97838

PARTY CHIEF

KEITH P. PRIMM

NOTES

WITNESS

BRIT L. PRIMM

RECEIVED BY

Umatilla County Surveyor

Date 12-01

Rec'd By KR

No. 01-213-9

SURVEYOR'S SEAL

REGISTERED
 PROFESSIONAL
 LAND SURVEYOR

BRIT L. PRIMM
 OREGON
 JULY 13, 1999
 BRIT L. PRIMM
 48509

EXPIRATION DATE: 12/31/02