

OREGON CORNER RESTORATION FORM

Section 1 Township 3N Range 29E
 County Umatilla Date: 05-09-02

Corner Designation: 3N29A21

Condition Report Only
 Not Found
 Remonumented
 Unrecorded
 Surveyed In
 Referenced Out

Previous Renewals / Surveys, etc.

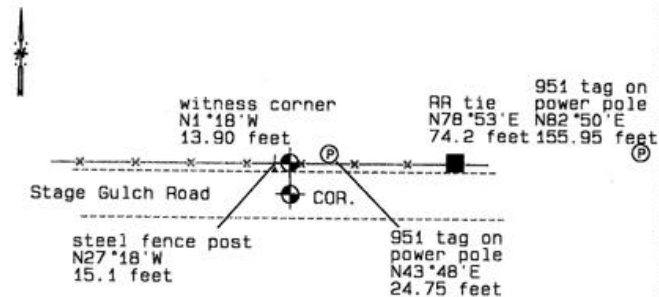
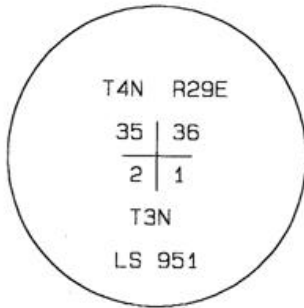
Monument set by survey 98-213-C. Survey 01-146-B records finding a 2 3/8" brass capped monument at this corner location.

Monument and Accessories Found: (condition and source)

Found the record monument above.

SKETCH

DIAGRAM



MONUMENT (S) AND ACCESSORIES SET (Procedures and Description)

None.

REFERENCES SET:

None.

Made GPS tie to TRI Station Echo.	Oregon State Plane Coord. - North Zone
Latitude 45°46'38.45975"N	Northing 772422.58
Longitude 119°08'34.43365"W	Easting 8548347.46
NAD 83(1991)	Ortho Height 818.79
	Ellipsoidal Height 749.44

Location and Comments

Compass Declination
20°E

Surveyors Seal

From intersection of S. Ash and Stage Gulch Road in Stanfield, go east 3.5 miles.

REGISTERED
 PROFESSIONAL
 LAND SURVEYOR

RECEIVED BY:

Firm / Agency

David L. Haddock

Date: 6-22
 Rec'd By: KR
 No. 02-169-9

Haddock Surveying
 P. O. Box 1574
 Pendleton, OR 97801
 (541) 276-2174

OREGON
 JULY 12, 1968
 DAVID L. HADDOCK
 852

RENEWS 6-30-03