

**OREGON CORNER RESTORATION FORM**

Section 31,32,5,6  
County Umatilla

Township 3N,4N  
Date: 12/31/08

Range 29E

Corner Designation: 3N29A5

Section Corner

- Condition Report Only
- Not Found
- Remonumented
- Unrecorded
- Surveyed In
- Referenced Out

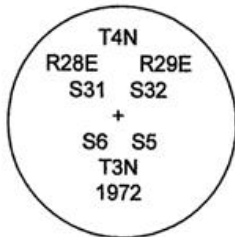
**Previous Renewals / Surveys, etc.**

Originally Surveyed by Gates in 1859. He set a post in a mound of earth.  
 In 1972 Harris found an Iron Pipe.  
 In 1988 Edwards set a 1"x30" iron pipe with a 2 3/8" brass cap in place of a 1 1/2" iron pipe.  
 In 1998 Haddock found a 2 1/4" Brass cap.  
 In 2002 Primm found a 2 3/8" Brass cap.

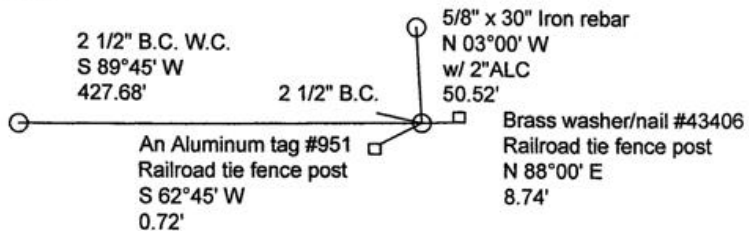
**Monuments and Accessories Found: (Condition and Source)**

An aluminum tag #951 on a railroad tie fence post lies S 62°45' W, 0.72'.  
 A 5/8" x 30" Iron rebar w/ 2" Aluminum cap lies N 03°00' W, 50.52'.  
 A 1" x 30" Iron rebar w/ 2 3/8" B.C. lies S 89°45' W, 427.68'.  
 A 2 3/8" B.C.

Diagram



Sketch



NAD 83/91  
 OREGON STATE PLANE NORTH  
 INTERNATIONAL FEET

771913.625  
 8527247.992

LAT - 45° 46' 36.82799" N LON - 119° 13' 32.21005" W

**Monument (s) Set (Procedures and Description)**

None.

**References Set:**

A brass washer #43406 and nail on a railroad tie fence post lies N 88°00' E, 8.74'.

**Location and Comments**

Heading West from Stanfield on Stanfield Meadows Rd. go app. .1 miles once you cross the Umatilla River. The corner is 450 feet east from the witness corner next to the bend in the road.

**Compass Declination**

17° E

**Surveyors Seal**

REGISTERED  
 PROFESSIONAL  
 LAND SURVEYOR

*Robert Douglas English*  
 OREGON  
 JANUARY 11, 2005  
 ROBERT DOUGLAS ENGLISH  
 43406LS

RENEWAL DATE: 12/31/09

**RECEIVED BY:**

Date: 01-09  
 Rec'd By: KR  
 No. 09-15-R

**Firm / Agency**

Survey One, LLC.  
 P.O. Box 382  
 Pendleton, OR 97801  
 (541) 276-2055