

# CORNER RESTORATION FORM

Township 3N, 4N Range 29E Section 5,6,31,32 County UMATILLA

State OREGON Date 3/30/2023 Number Z-5

Corner Designation : SECTION CORNER: 5, 6, 31, 32

Condition Report Only

Not Found

Renewed

Surveyed In

Referenced

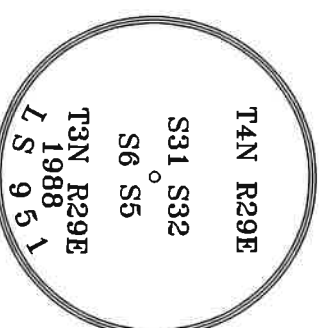
Previous Renewals ORIGINAL SOURCE OF CORNER  
 ORIGINALLY SURVEYED IN 1869 BY GATES HE SET A STAKE  
 IN MOUND OF EARTH  
 1949 FRALEY SET A 1"X30" I.P. COUNTY SURVEY NO. Q-510-AX  
 1980 KRUMBEIN SET A B.C. COUNTY SURVEY NO. S-158-C  
 1988 EDWARDS SET A 1"X30" I.P. W/2 3/8" B.C. IN PLACE OF  
 A 1 1/2" I.P. COUNTY SURVEY NO. 88-089-B & CORNER  
 FORM NO. Z5-88-055-R & Z5-88-057-B

### MONUMENT DETAIL

Found  Set

BASIS OF BEARINGS, NAD 83/91 OREGON STATE PLANE  
 COORDINATES NORTH ZONE:

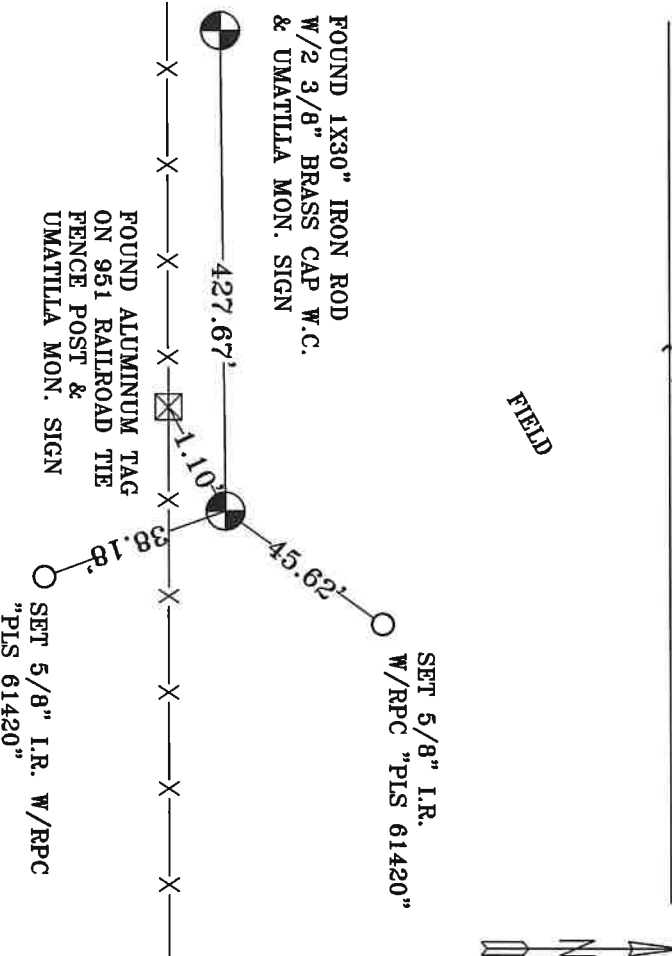
NORTHING: 771908.42  
 EASTING: 8527253.15



### Monument & Accessories Set/Found (Procedure and Description)

- FOUND A 2 3/8" BRASS CAP, COUNTY SURVEY NO. 88-089-B & CORNER FORM NO. Z3-88-055-R & Z3-88-057-B
- FOUND A 1"X30" IRON ROD W/ 2-3/8" BRASS CAP W.C. & UMATILLA MON. SIGN S 89°03' W 427.67', CORNER FORM NO. Z5-95-60-B
- FOUND A ALUMINUM TAG 951 ON RAILROAD TIE FENCE POST & UMATILLA MON. SIGN S 74°20' W 1.10', CORNER FORM NO. Z5-88-55-R & Z5-88-057-B
- SET A 5/8" I.R. W/RPC "PLS 61420" FLUSH N 36°05' E 45.62'
- SET A 5/8" I.R. W/RPC "PLS 61420" FLUSH S 20°04' E 38.18'

### Sketch of Monument, Accessories and General Area



**REGISTERED PROFESSIONAL LAND SURVEYOR**

*Lance Clark King*  
**OREGON**  
 MAY 10, 2011  
**LANCE CLARK KING**  
 61420

**RENEWS: 6/30/2023**

Agency: **CK3, LLC**  
 945 W. ORCHARD  
 HERMISTON OREGON 97838  
 OFFICE: 541-567-2345  
 FAX: 541-567-2305  
 WEB: CK3ILC.NET  
 Field Book # 0-350

COUNTY SURVEYOR RECORDING INFO

Received CT  
 Filed 5/4/23  
 Survey No. Z3-042-C  
 Drawing No. \_\_\_\_\_  
 Index No. Z-5