

**OREGON CORNER IDENTIFICATION FORM**

Section 5,32 Township 3N,4N  
County Umatilla Date: 12/31/08

Range 29E

Corner Designation: 3N29A7

1/4 corner common to section 5, T3N, R29E  
and section 32, T4N, R29E, W.M.

- Condition Report Only
- Not Found
- Remonumented
- Unrecorded
- Surveyed In
- Referenced Out

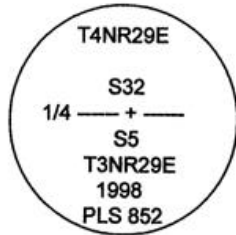
**Previous Renewals / Surveys, etc.**

Originally Surveyed by Gates in 1859. He set a post in a mound of earth.  
Kimbrell set an I.P. for corner in block 2 of record of private surveys, pg 263.  
In 1974 Krumbein Found a Brass cap at this location.  
In 1995 Edwards set a 5/8" Iron rod with a 2" aluminum cap.  
In 1998 Haddock set a 2 1/4" Brass cap over Kimbrells Iron pipe.  
In 2002 Primm found a 2 1/4" Brass cap at this location.

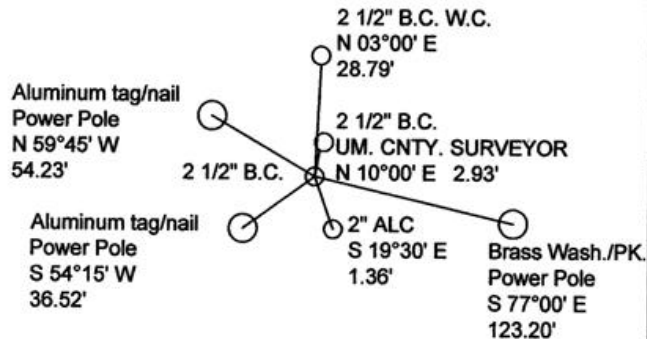
**Monuments and Accessories Found: (Condition and Source)**

An aluminum tag #951 and nail on a power pole lies N 59°45' W, 54.23'.  
A 2 1/2" B.C., #933, lies N 10°00' E, 2.93'.  
A 2 1/2" B.C. W.C. lies N 03°00' E, 28.79'.  
A 2" ALC #951 lies S 19°30' E, 1.36'.  
An aluminum tag #951 and nail on a power pole lies S 54°15' W, 36.52'.  
A 2 1/2" B.C. #852

Diagram



Sketch



NAD 83/91  
OREGON STATE PLANE NORTH  
INTERNATIONAL FEET

N 771974.946  
E 8529868.940

LAT - 45° 46' 37.02353" N LON - 119° 12' 55.22134" W

**Monument (s) Set (Procedures and Description)**

None.

**References Set:**

A brass washer #43406 and nail on a power pole lies S 77°00' E, 123.20'.

**Location and Comments**

The corner is in the intersection of  
Dunne St. and Ball Avenue.

**Compass Declination**  
17° E

**Surveyors Seal**

REGISTERED  
PROFESSIONAL  
LAND SURVEYOR

*Robert Douglas English*  
OREGON  
JANUARY 11, 2005  
ROBERT DOUGLAS ENGLISH  
43406LS

RECEIVED BY:

**Firm / Agency**

Date: 1-09  
Rec'd By: KK  
No. 09-14-R

Survey One, LLC.  
P.O. Box 382  
Pendleton, OR 97801  
(541) 276-2055

RENEWAL DATE: 12/31/09