

GPS CONTROL STATION

OREGON STATE PLANE, NORTH ZONE

STATION NAME: 3N29A7 GEODETIC COORDINATE: NAD 83(91)

SECTION: N 1/4 S5 LAT: 45°46'36.97426" N  
T. 3N., R. 29 E., W. M. LONG: 119°12'55.14500" W  
UMATILLA COUNTY  
OREGON

STATE PLANE CO-ORDINATES,  
NAD 83-91, INT. FT. :

DATE SURVEYED: March, 1998

N: 771970.042

E: 8529874.430

SURVEYOR: DAVID L. HADDOCK  
PLS 852

THETA: 0°54'39.88"

SCALE FACTOR: 0.99995194

ORTHO ELEV: 592

FIRM: HADDOCK SURVEYING  
P. O. BOX 1574  
PENDLETON, OR 97801  
(541) 276-2174

ELEV. DATUM: NGVD29

HORIZONTAL SECOND ORDER,  
ORDER: CLASS I

---

LOCATION: In the City of Stanfield at the intersection of South Dunne St. and East Ball Ave. There are multiple caps and the coordinates shown are for the Brass cap stamped 1998, PLS 852. The filed corner certificate should be consulted when using this corner.

STATION: Station is a 2 1/4 inch brass cap on a galvanized iron pipe in a 6" concrete collar set flush with the pavement.



*David L. Haddock*



OREGON CORNER REFORMATION FORM

Section 5 Township 3N Range 29E  
 County Umatilla Date: March 20, 1998

Corner Designation: 3N29A7

1/4 corner common to section 5, T3N, R29E  
 and section 32, T4N, R29E, W.M.

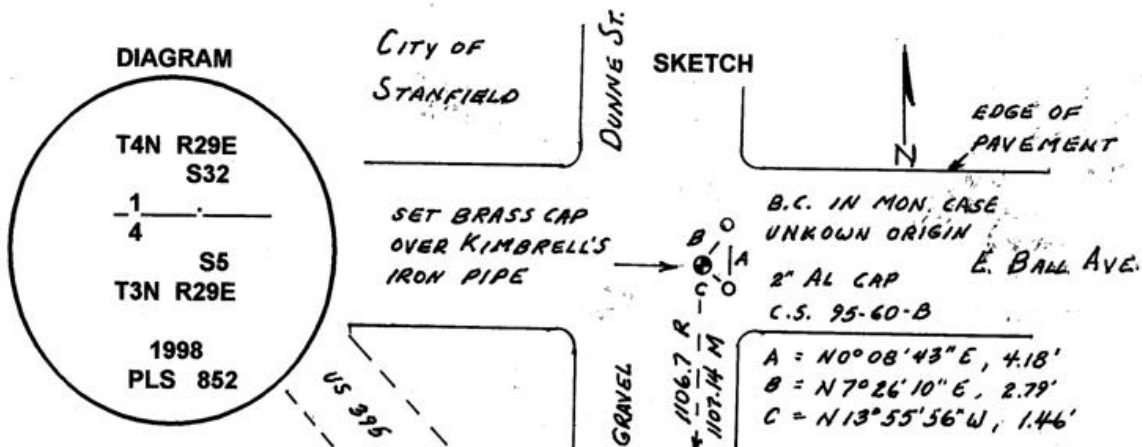
Condition Report Only  
 Not found  
 Remonumented  
 Unrecorded  
 Surveyed in  
 Referenced out

Previous Renewals / Surveys, etc.

Corner originally established by Gates in 1859 under contract No. 84 was a post and a mound. John Kimbrell set an iron pipe for the corner in book 2 of the record of private surveys, page 263. PLS 933 found a brass cap at this location in 1974. PLS 951 set a 5/8" rebar with a 2" aluminum cap in 1995 in survey 95-60-B.

Monument and Accessories found: ( condition and source )

Found the brass cap found by PLS 933 in a monument case, the aluminum cap on a rebar set by PLS 951 in 1995, and a 1 1/8" od pipe 10" below the surface of the pavement.



MONUMENT (S) AND ACCESSORIES SET (Procedures and Description)

The iron pipe set by Kimbrell was recorded as found in survey Q-513-C and the railroad map. Survey L-70-A which measured to the monuments set by survey Q-513-C indicated that the 1974 brass cap was out of position by 3 feet and not the 4 feet as determined by survey 95-60-B from measurements to a monument of unknown origin. I measured the distance between the found pipe and the monuments set by survey Q-513-C and found the distance to be 0.44 feet longer than record distance.

Accepted the pipe as the corner and set a 2 1/4 inch brass cap on a 1 1/8"x12" galvanized iron pipe over the record pipe flush with the pavement in a concrete collar. The cap was stamped as shown above.

REFERENCES SET:

none.

Location and comments

Compass Declination

Surveyors Seal

RECEIVED BY:  
Umatilla County Surveyor  
 Date: 8-98  
 Rec'd By: KK  
 No. 98-155-C

Firm / Agency  
 Haddock Surveying  
 Address  
 P.O. Box 1574  
 Pendleton, Or. 97801  
 Party Chief  
 Stephen K, Haddock

REGISTERED  
 PROFESSIONAL  
 LAND SURVEYOR

*David L. Haddock*

OREGON  
 JULY 12, 1988  
 DAVID L. HADDOCK  
 852