

# OREGON CORNER RESTORATION FORM

SECTION 24      TOWNSHIP 4 NORTH    RANGE 29 EAST      P-25

COUNTY : UMATILLA      DATE 11-2001

CORNER DESIGNATION

E 1/4 CORNER

- CONDITION REPORT ONLY
- NOT FOUND
- RENEWED
- UNCOVERED
- SURVEYED IN
- REFERENCED

PREVIOUS RENEWALS / SURVEYS, ETC.

ORIGINALLY SURVEYED IN 1860 BY CAMBELL UNDER CONTRACT #95. HE SET A POST IN A MOUND OF EARTH AND A CHARRED STAKE.

IN 1998 EDWARDS SET A 1"X30" IRON PIPE WITH A 2 3/8" BRASS CAP BY SINGLE PROPORTION.

MONUMENTS AND ACCESSORIES FOUND: CONDITION AND SOURCE

FOUND A 2 3/8" BRASS CAP STAMPED AS BELOW.  
FROM WHICH:

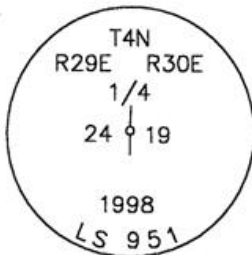
AN ALUMINUM TAG #951 IN A POWER POLE BEARS N 2°45'34" E 216.28 FEET.

AN ALUMINUM TAG #951 IN A POWER POLE BEARS S 3°18'39" E 131.08 FEET.

A 5/8" IRON REBAR WITH PLASTIC CAP #951 BEARS N 89°54'37" E 9.13 FEET

A 5/8" IRON REBAR WITH PLASTIC CAP #951 BEARS S 3°38'25" E 213.45'

MONUMENT DETAIL



NAD 83/91  
OREGON STATE PLANE  
INTERNATIONAL FEET  
785723.3966  
8553430.0619

MONUMENT SET ( PROCEDURES AND DESCRIPTION )

NEW ACCESSORIES FROM WHICH

LOCATION AND COMMENTS  
FROM THE INTERSECTION OF  
FEEDVILLE ROAD AND A LARGE  
POWER LINE, GO NORTH ALONG  
POWER LINE 0.5 MILES. CORNER  
LIES 9 FEET WEST OF FENCE.

COMPASS DEC.

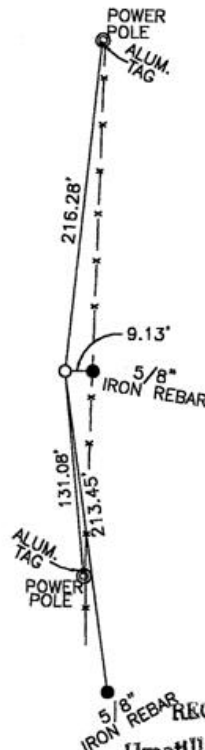
FIRM/AGENCY  
EDWARDS SURVEYING  
P.O. BOX 763  
HERMISTON, OREGON 97838

PARTY CHIEF  
D. EDWARDS

NOTES

WITNESS  
CURTIS J FAVOREL

SKETCH



RECEIVED BY  
Umatilla County Surveyor  
Date 12-01  
Rec'd By KE  
No. 01-213-9

SURVEYOR'S SEAL

REGISTERED  
PROFESSIONAL  
LAND SURVEYOR

Dennis Edwards

OREGON  
JULY 16, 1971  
G. DENNIS EDWARDS  
9 5 1  
RENEWS 12/31/2001