

OREGON CORNER RESTORATION FORM

Section 2 Township 4N Range 33E
 County Umatilla Date: January 7, 2000

Corner Designation: 4N33A19

North 1/4 corner for Section 2,
 T4N, R33E, W.M.

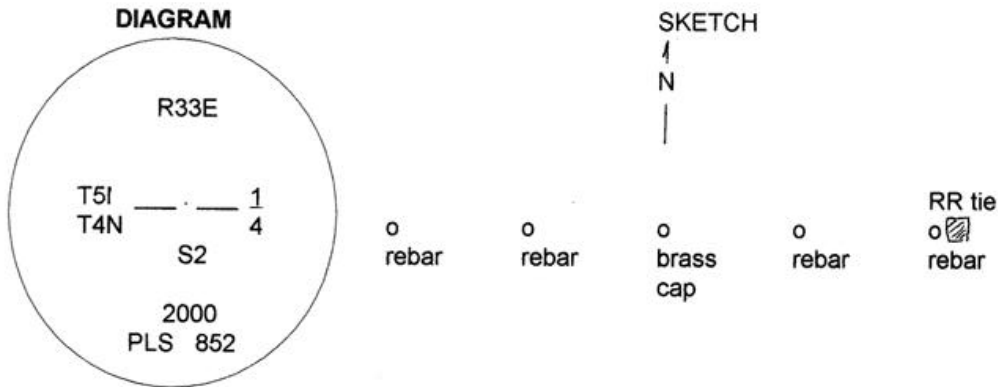
Condition Report Only
 Not found
 Remonumented
 Unrecorded
 Surveyed in
 Referenced out

Previous Renewals / Surveys, etc.

Standard township line originally surveyed by Odell and Lewis under contract #110,
 dated February 7, 1865.

The north 1/4 corner for Section 2 was not set.

Monument and Accessories found: (condition and source)
 None



MONUMENT (S) AND ACCESSORIES SET (Procedures and Description)

At a surveyed point on the line between the SW and SE corners of Section 35, T5N, R33E, and halfway between the NW and NE corners of Section 2, T4N, R33E, I set a 1.25" x 30" galvanized iron pipe with a 2.25" brass cap stamped as shown in the diagram above, 2' below the ground surface.

REFERENCES SET:

I set 4 - 5/8" x 24" iron rebars with 1.25" plastic caps stamped ORLS 852 and WALS 13922 as described below:

- An iron rebar bears N83°00'W, 56.52 feet with the plastic cap 2' below the ground surface.
- An iron rebar bears N80°34'W, 27.50 feet with the plastic cap 2' below the ground surface.
- An iron rebar bears S89°20'E, 27.94 feet with the plastic cap 2' below the ground surface.
- An iron rebar bears S88°57'E, 79.09 feet with the plastic cap 2' at the ground surface and at the foot of a railroad tie buried vertically in the ground with the top four feet above the surface of the ground.

Location and comments
 N87°E, 2165' of the junction of
 Kupers and Vansycle Roads.

Compass Declination
 20° west

Surveyors Seal

RECEIVED BY:
 Umatilla County Surveyor
 Date: Jan, 2000
 Rec'd By: KIC
 No. 99-299-B

Firm / Agency
 Haddock Surveying
 Address
 P.O. Box 1574
 Pendleton, Or. 97801
 Party Chief
 David L. Haddock

REGISTERED
 PROFESSIONAL
 LAND SURVEYOR

David L. Haddock

OREGON
 JULY 12, 1968
 DAVID L. HADDOCK
 852