

Oregon Corner Restoration Form

Section 1-36 Township 4N Range 34E W.M.

County Umatilla Date October 20, 1997

Corner Designation Z-23

- Condition Report Only
- Not Found
- Renewed
- Unrecorded
- Surveyed In
- Referenced Out

<u>36</u>	T4N
	R34E
<u>1</u>	T3N

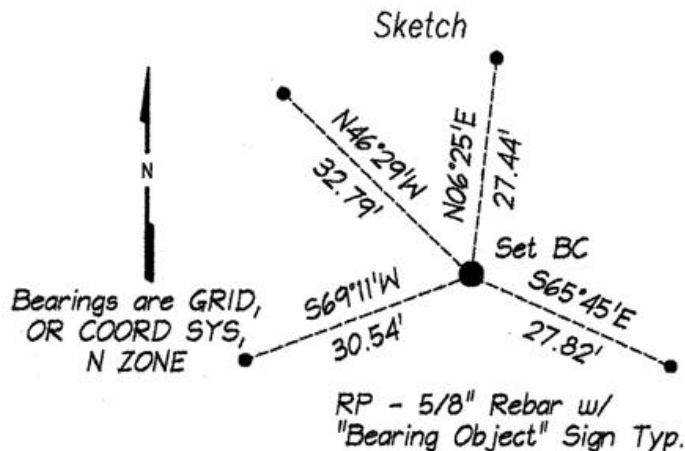
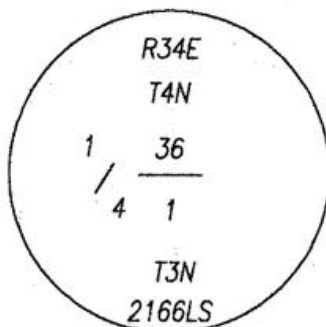
Previous Renewals / Surveys, etc.

W. Odell set a corner post, with charred stake, mound, and pits in 1866.

Monument(s) & Accessories Found: (Condition and Source)

No monument or accessories found.

Monument Detail



Monument Set (Procedures and Description)

I set a 2 1/2" Brass Cap for the corner 8" deep in Rainville Road.

New Accessories

A 5/8" rebar w/ "Bearing Object" sign attached bears N46°29'W, 32.79 feet.

A 5/8" rebar w/ "Bearing Object" sign attached bears S65°45'E, 27.82 feet.

A 5/8" rebar w/ "Bearing Object" sign attached bears N06°25'E, 27.44 feet.

A 5/8" rebar w/ "Bearing Object" sign attached bears S69°11'W, 30.54 feet.

Location & Comments

Corner is located in Rainville Road one half mile West of Pambrun Road.

Compass Declination n/a

Firm:

Dwight M. Bartleson L.S.

79902 LaMar Gulch Road

Athens, OR 97813

Party Chief: D. Bartleson

Notes D. Bartleson

Witness none

Surveyor's Seal

REGISTERED
PROFESSIONAL
LAND SURVEYOR

Dwight M. Bartleson

OREGON
JULY 26, 1985
DWIGHT M. BARTLESON
02166LS

Renews: Dec. 31, 1997