

OREGON CORNER RESTORATION FORM

Section 1 Township 4 N Range 34 E

County Umatilla Date 1-27-88

A-25

CORNER DESIGNATION

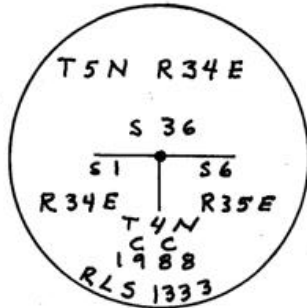
- Condition Report Only
- Not Found
- Renewed
- Unrecorded
- Surveyed In
- Referenced Out

Previous Renewals/Surveys, etc. Originally a post, pits and mounds (1865)

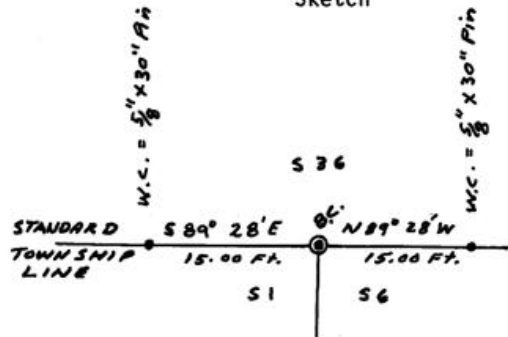
Monument(s) & Accessories Found: (Condition and Source)

(None) The only evidence is a plow line running east and west and evidence of an old fence line E. and W.

Monument Detail



Sketch



Monument Set (Procedures and Description)

Set 1" x 30" G.I.P. w/flared base and 2 1/2" brass cap 6" above the ground.

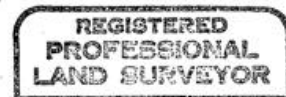
New Accessories

A witness monument bears N. 89° 28' W - 15.00 feet.
A witness monument bears S 89° 28' E - 15.00 feet.
Witness monuments are 5/8" x 30" rebar with red plastic caps marked R.L.S. 1333. Set steel fence post near each W.C. and section corner with yellow witness signs attached.

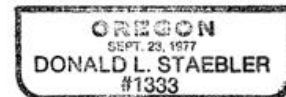
Location & Comments

Corner is located in old fence line and plowline running E. - W.
Compass Declination _____
Firm/Agency Don Staebler
Engineer - Surveyor _____
Address 1532 S. W. 41st

Surveyor's Seal



Donald L. Staebler



RECEIVED BY

Umatilla County Surveyor

Date 2-88

Rec'd By JA

No. 88-9-A

Pendleton, OR 97801

Party Chief Don Staebler

Notes _____

Witness _____