

**OREGON CORNER RESTORATION FORM**

COUNTY: Umatilla DATE: 05/25/01

CORNER DESIGNATION: A-17, Northwest Corner of Section 3, T4N., R35E., W.M..

PREVIOUS RENEWALS/SURVEYS ETC.: Corner originally established by Wm. H. Odell, under Contract No. 114, dated July 2nd, 1866. Record states: Set closing corner for Secs. 2 & 3; drove charred stake, dug pits and raised mound as per instructions.

MONUMENT AND ACCESSORIES FOUND: None. Oregon Washington Railroad and Navigation Company Right-of-Way and Track Maps show a tie to this corner. We relocate the centerline of the track, (parts of which are now removed), through the corner area, locating the curve and tangents north of the corner area to determine railroad stationing.

**MONUMENT MARKING DETAIL:**

T5N R35E  
S34  
S3 | S2  
CC  
T4N R35E  
2001  
PLS 1106

**MONUMENT SET:**

At an angle of 76°35', measured clockwise from the centerline of old railroad extending SW, at a distance of 29.00 feet from railroad station 245+63.0, set 2 1/2" aluminum pipe with 2 1/2" aluminum cap 6" below road surface, with railroad spike set on top of monument as a memorial. Monument stamped as shown in "Monument Marking Detail".

**From which:**

- A brass washer stamped "PLS 1106", 1.0 feet above ground level in Pacific Power and Light pole #020800, bears N 89° E, 92.9 feet.
- A 5/8" x 30" iron rebar with yellow plastic cap stamped "OR PLS 1106, WA PLS 17372", set flush with the ground, bears S 33 1/2° E, 42.4 feet.
- The center of a railroad crossing sign post, 1.0 feet above ground level, bears South, 39.8 feet.
- A 3" bench mark brass disk stamped "USGS V80 1933" set in a concrete post, 6" above ground level, bears N 46 1/2° W, 20.4 feet.
- Set steel fence post near 5/8" iron rebar with "witness" sign attached. Attached bearing object tags to power pole and 5/8" iron rebar.

**OREGON STATE PLANE CO-ORDINATES, North Zone, NAD83(91), International Feet:**

N: 806387.64  
E: 8733215.11

**LOCATION AND COMMENTS:**

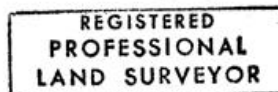
Corner located on the North edge of dirt road approximately 29 feet West of centerline of railroad tracks.

FIRM: William R. Wells, PLS  
P.O. Box 1696  
Pendleton, OR 97801

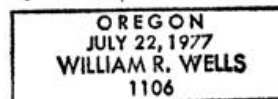
COMPASS DECLINATION: 18° East

Surveyor's Seal

Witnesses: Jason Wells, LSIT  
Mark Hammersla  
4N35A17



*William R. Wells*



*renews 6-30-02*

*02-12-C*