

OREGON CORNER RE-ESTABLISHMENT FORM

COUNTY: Umatilla DATE: 03/05/97

CORNER DESIGNATION: R-3, The North Quarter Corner of Section 30, T4N., R35E., W.M.

PREVIOUS RENEWALS/SURVEYS, ETC.: Corner established by William H. Odell, GLO Contract No. 114, dated July 2, 1866. Survey notes state: Set post Cor. 1/4 Sec.: drove charred stake, dug pits and raised mound as per instructions. Corner re-established by Z.F. Moody, GLO Contract No. 164, dated October 4, 1871. Notes state: Set post and made earth mound for 1/4 Sec. Cor. Corner re-established by Jas. P. Currin & Jas. E. Noland, under Special Contract, dated May 4, 1886. Notes state: Set post, 3 ft. long, 3 ins. sq., 24 ins. in the ground, for 1/4 Sec. Cor. marked 1/4 S. on N. face, dug pits, 18 x 18 x 12 ins. E. & W. of post 5 1/2 ft. dist., raised mound of earth 1 1/2 ft. high, 3 1/2 ft. base around it.

Corner re-established by PLS 933, Umatilla County Survey Record No. 83-156-C. Notes state: K.E.L. set B.C. based on Athena-Weston School survey, Co. Survey Drwg No. K-73-B.

MONUMENT AND ACCESSORIES FOUND: Found 2 1/2" brass cap 1.0 feet below dirt road surface.

MONUMENT MARKING DETAIL:

Umatilla County
T4N R35E
1 S19
4 S30
1983
PLS 933
Surveyor

MONUMENT SET: Existing monument.

New Accessories:

A brass washer stamped "PLS 1106" on the South side of an 8.0 foot tall leaning power pole, nailed 1.0 feet above ground surface, bears N 81° E, 124.2 feet.

A brass washer stamped "PLS 1106" on the West side of a railroad tie fence post corner, nailed 1.0 feet above ground surface, bears S 06° E, 6.3 feet.

A 5/8" x 24" iron rod with a yellow plastic cap marked "OR PLS 1106, WA PLS 17372" bears S 54° W, 26.3. Witness sign attached to nearby steel beam fence corner.

A 5/8" x 24" iron rod with a yellow plastic cap marked "OR PLS 1106, WA PLS 17372" buried 1.5 feet underground, bears N 16° W, 17.8 feet.

All iron rods have bearing object signs attached.

LOCATION & COMMENTS: Near South edge of East-West unimproved road.

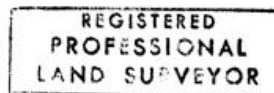
COMPASS DECLINATION: 18° East

Surveyor's Seal

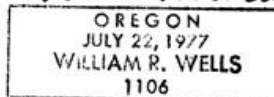
Witnesses: Kelly Snively
Troy Baker

OREGON NORTH STATE PLANE CO-ORDINATE FOR CORNER, NAD 83(91), INT. FEET:

N: 785780.12
E: 8715101.06



Will. R. Wells



Renews 6-30-98

97-141-C