

OREGON CORNER RESTORATION FORM

COUNTY: Umatilla

DATE: July 26, 2006

CORNER DESIGNATION: R-17 Southeast Corner Section 22, T. 4 North, Range 36 E.W.M.

PREVIOUS RENEWALS/SURVEYS ETC.

William Odell set a post and scribed four bearing trees (Contract No. 114, dated July 2, 1866).

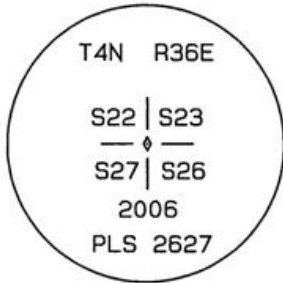
In 1880, John Arnold, County Surveyor, found the corner to be 76.95 chains south of the Northeast Corner of the section.

In 1885, W. T. Chalk, County Surveyor, found a basalt stone and Odell's bearing trees.

In 2005, Steve Haddock found a 5/8" hex bolt 6" below the road surface.

MONUMENT AND ACCESSORIES FOUND: None

MONUMENT MARKING DETAIL:



OREGON STATE PLANE COORDINATES, NORTH ZONE, NAD '83 ('91), INT. FEET:

NORTH: 786,096.32

EAST: 8,764,402.29

MONUMENT SET (PROCEDURES AND DESCRIPTION):

Found a 5/8" X 8" hex bolt 6" below the surface of County Road No. 637 at its intersection with an east-west fence line to the west. I removed the bolt and replaced it with a 5/8" X 24" steel rebar with 2" aluminum cap marked as shown above set 4" below the road surface.

NEW ACCESSORIES:

A 5/8" X 30" steel rebar with blue plastic cap marked "UCPWD...LS2627" set on the county road R/W line bears N57°28'24"W, 56.00'.

A 5/8" X 30" steel rebar with blue plastic cap marked "UCPWD...LS2627" set on the county road R/W line bears N27°32'45"W, 33.88'.

A 5/8" X 30" steel rebar with blue plastic cap marked "UCPWD...LS2627" set on the county road R/W line bears S88°23'54"E, 16.50'. A bearing object tag is attached to UECA pole #4N36E230001 which lies 0.8' northwesterly.

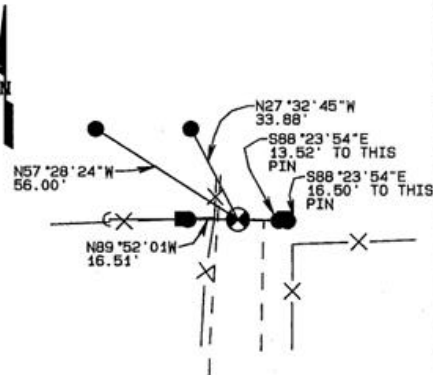
A 5/8" X 30" steel rebar with blue plastic cap marked "UCPWD...LS2627" set on the county road R/W line bears S88°23'54"E, 13.52'. A bearing object tag is attached to UECA pole #4N36E230001 which lies 1.3' northeasterly.

A 5/8" X 30" steel rebar with blue plastic cap marked "UCPWD...LS2627" set on the county road R/W centerline bears N89°52'01"W, 16.51'. A bearing object tag is attached to a nearby guy pole which bears 1.9' westerly.

SKETCH:

NO SCALE

NOTE: BEARINGS AND DISTANCES ARE NAD '83 ('91) GRID



● SET 2" ALUMINUM CAP ON 5/8" X 24" G.I.P. 4" BELOW GROUND

● SET 5/8" X 30" STEEL REBAR WITH BLUE PLASTIC CAP MARKED "UCPWD...LS2627"

LOCATION AND COMMENTS:

The monument is set 4" below the surface of the county road where the road crosses an east-west fence line to the west approximately 0.7 mile north of State Highway 204.

COMPASS DECLINATION: N/A

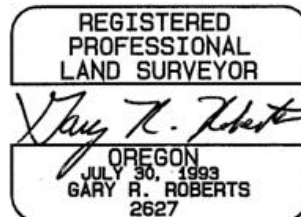
FIRM/AGENCY: Umatilla County Road Dept. 3920 Westgate Pendleton, Oregon 97801

PARTY CHIEF: Gary Roberts

NOTES: None

WITNESS: None

SURVEYOR'S SEAL



RENEWS 12/31/06

06-473-C

06-473-C