

OREGON CORNER RESTORATION FORM

COUNTY: Umatilla DATE: 10-29-03

CORNER DESIGNATION: N-25, The Northeast Corner of Section 24, T4N, R36E, W.M.

PREVIOUS RENEWALS/SURVEYS ETC.: Corner originally established by Wm. Odell, under Contract No. 114, dated July 2, 1866. Notes state: Set post Cor. for Secs. 13, 24, 18 & 19, from which A Fir, 42 ins. diam. brs. N. 30° E., 28 lks. A Larch, 12 ins. diam. brs. N. 45° W., 118 lks. A Larch, 20 ins. diam. brs. S. 70° W., 92 lks.

Corner point was recovered by J.C. Arnold, County Surveyor, in Umatilla County Survey No. 32, in June 1888. Survey No. 32 is recorded at Book 1, Page 181, Record of Private Surveys. Arnold's notes state:the original sec. Cor., which I find as described in the notes of the original surveys. At the true corner point, I set a basalt stone, 18 x 6 x 5 ins. mkd. 6 notched on E. face, 3 notches on N., and 3 notches on S., 12 ins. in ground by side of original post, charred at lower end.

Survey No. Q-748-AX, by W.E.O. Criger, in 1949, reports the corner as "Not Found".

MONUMENT AND ACCESSORIES FOUND:

Found a set 18 x 6 x 5 inch basalt stone marked with 6 grooves on East side and 3 grooves on North and South sides. Stone projects 4 inches out of ground, 2 feet East of a North-South fence line.

From the recovered corner stone:

A 26 " cut western larch stump with blaze face area rotted out bears N 45° W., 118 lks.

A uprooted, rotted 20 " western larch bears S 70° W., 92 lks to root hole. Nothing remains of the 42" fir bearing tree.

MONUMENT MARKING DETAIL:

T4N
R36E R37E
S13|S18
S24|S19
2003
PLS 1106

MONUMENT SET:

At position of found stone set a 2 1/2" brass cap on 1 1/4" by 30" galvanized iron pipe 26" in the ground and surrounded with mound of earth. Buried corner stone on West side of new monument with grooves visible on one side of stone. Cap is marked as shown in "Monument Marking Detail".

New Accessories:

A 12" aspen scribed : "T4N R37E S18 BT" with 3/4" brass washer stamped "PLS 1106" nailed to face of blaze bears N 46 1/2° E, 50.5 feet.

A 1/2" x 24" rebar with top 2" above ground level, in a North-South fence, bears S 02° W, 32.0 feet.

A 7" aspen scribed "T4N R36E S13 BT" with a 3/4" brass washer stamped "PLS 1106" nailed to face of blaze bears N 52° W, 25.4 feet.

A 1/2" x 24" rebar with top 2" above ground level, in a North-South fence bears N 08° W, 33.6 feet.

New bearing trees have a "bearing object" sign nailed to them. Rebar accessories have a "bearing object" sign wired to them. Bearing trees are "bark scribed".

Set a steel fence post with a "witness" sign 1.0 feet North of corner.

LOCATION AND COMMENTS: Corner located on a steep West facing hillside.

FIRM: William R. Wells, PLS

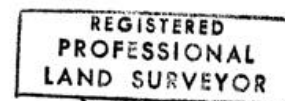
P.O. Box 1696

Pendleton, OR 97801

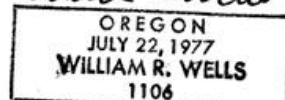
COMPASS DECLINATION: 18° East

Witnesses: Jason Wells, LSIT, Mark Hammersla

4N36N25



William R. Wells



renews 6-30-04

03-317-B