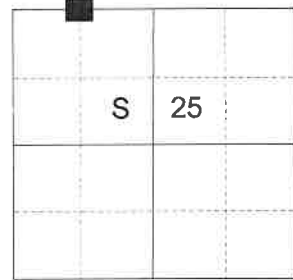


CERTIFIED RECORD OF LAND CORNER MONUMENTATION

**HISTORY OF ORIGINAL CORNER ESTABLISHED:**

Corner not previously established.

T 4 N R 37 E R-22



**DESCRIPTION OF CORNER EVIDENCE FOUND:**

None.

**DESCRIPTION OF MONUMENT AND ACCESSORIES I ESTABLISHED TO MONUMENT THE ORIGINAL LOCATION OF THIS CORNER:**

At position determined by survey, I chisel a 3" 'X' in rock, and set a 5/8" x 30" iron pin Witness Corner, which bears South 1°07'55" West, a distance of 10.00 feet from true position, 28" in the ground, with a 2 1/2" aluminum cap, marked as shown below, from which:

**NEW BEARING OBJECTS:**

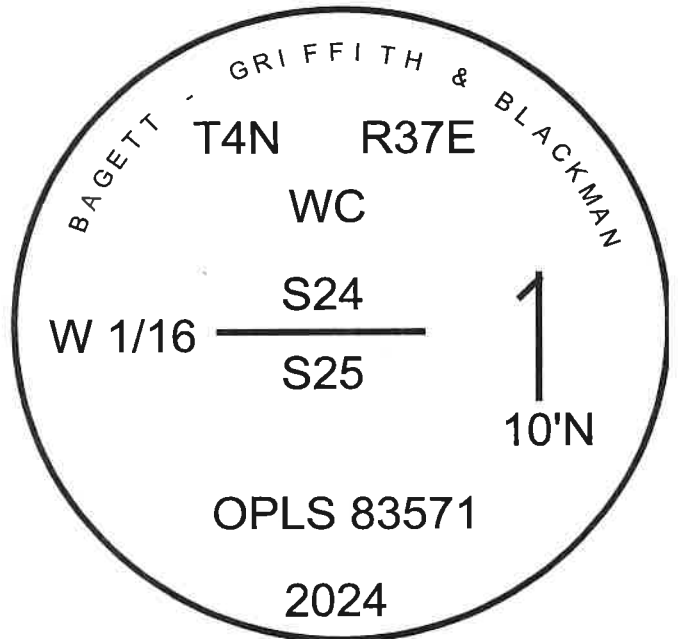
A 4" diam. Douglas Fir bears South 30° West, a distance of 20.00 feet, marked W 1/16 S25 BT.  
A 2" Douglas Fir bears North 80° West, a distance of 14.00 feet, marked X BT.

Set steel fencepost 0.3 feet North of Witness Corner.

Falls on 15 ft. tall cliff edge.

I hereby certify that the corner was monumented on October 9, 2024.

Witnesses: Kyle Tucker



Renewal Date: June 30, 2025

I use a tape and compass in the establishment of the new bearing objects. I use 14° East declination. Bearings are measured to a brass washer labeled "OPLS 83571" in the BT blaze at the base of the tree. Distances are to a 60D nail in the right side of the base of the center of the tree.

24-104-B