

4-136

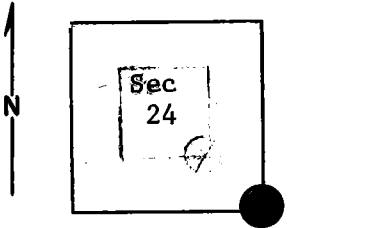
Index
 File No. R-25
 T 4 S. R. 29 E.
 Merid. Willamette

CORNER RECORD (SEARCH)
 (Ref. FSM 7151.4)

Tract or
 Survey No. Cor.
 No.

R.D. Ukiah County Umatilla & Morrow Co., Line.
 N.F. Umatilla State Oregon

CORNER DIAGRAM



DESCRIBE CORNER MONUMENT FOUND

Brass Cap! See Monumentation File
~~See R-1, T. 4 S., R. 30 E.~~

DESCRIBE BEARING TREES OR OTHER OFFICIAL ACCESSORIES FOUND

PHOTO IDENTIFICATION DATA

Photo No.
 Filed At.
 Object Ident.
 Ident. By
Signature

DESCRIBE CORNER LOCATION RELATIVE TO NEAR-BY FEATURES, ALSO HOW TO REACH CORNER

PLANE COORDINATE POSITION DATA

State Zone
 X
 Y
 Estab. By
Agency

Signature
T. Hollamon

Title
Eng, Tech,

Division

Headquarters

S.O,

Date

5/30/74

7100-52-(3/68)

CORNER RECORD (PERPETUATION)

MONUMENT: DESCRIBE NEW MONUMENT SET, OR WORK DONE TO PRESERVE EXISTING MONUMENT

9

ACCESSORIES : DESCRIBE NEW BT'S WITNESS OBJECTS ETC. ESTABLISHED, OR WORK DONE TO PRESERVE EXISTING EVIDENCE

10

Work Done By _____ Title _____ Date _____ State Registration No. or Agency _____

Certified Cor. Record Prepared ? Yes No Filed At: _____ Date _____

11

REMARKS

12

Index File No. T. R. M. Tract or Surv. No. Cor. _____

13

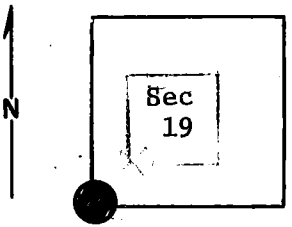
Index File No. R-1
 T 4 S. R. 30 E.
 Merid. Willamette

CORNER RECORD (SEARCH)
 (Ref. FSM 7151.4)

Tract or Survey No. Cor. No.

R.D. Ukiah County Umatilla & Morrow County Line
 N.F. Umatilla State Oregon

CORNER DIAGRAM



DESCRIBE CORNER MONUMENT FOUND

Stone mound, 2' diam., 10" deep, fair condition. No markings visible.

Brass Cap! See Monumentation File

DESCRIBE BEARING TREES OR OTHER OFFICIAL ACCESSORIES FOUND

A 22" p.pine bears N. 20°E., approx. 45 ft., scribing closed. This tree has an old B.T. tag.
 A 34" p.pine stump (12" high) bears S. 38°E., approx. 112 ft. B.T. scribed near ground. has been logged.
 A 24" p.pine bears N. 61°W., approx. 50 ft. Scribing visible. It has a location poster on it. (Cont. in block 12)

PHOTO IDENTIFICATION DATA

Photo No.
 Filed At.
 Object Ident.
 Ident. By
Signature

DESCRIBE CORNER LOCATION RELATIVE TO NEAR-BY FEATURES, ALSO HOW TO REACH CORNER

PLANE COORDINATE POSITION DATA

State Zone
 X
 Y
 Estab. By
Agency

Signature T. Hollamon Title Eng, Tech, Division Headquarters S,O, Date 5/30/74 7100-52-(3/68)

CORNER RECORD (PERPETUATION)

MONUMENT: DESCRIBE NEW MONUMENT SET, OR WORK DONE TO PRESERVE EXISTING MONUMENT

ACCESSORIES : DESCRIBE NEW BT'S WITNESS OBJECTS ETC. ESTABLISHED, OR WORK DONE TO PRESERVE EXISTING EVIDENCE

I placed a B.T. tag on the B.T. in the NW quadrant; also a B.T. tag on the B.T. stump in the SE quadrant. I also placed a location poster on an 8" p.pine at east edge of a primitive road approx. 300 ft. west of corner.

Work Done By _____ Title _____ Date _____ State Registration No. or Agency _____

Certified Cor. Record Prepared ? Yes No Filed At: _____ Date _____

REMARKS

(Cont. from block 3)

There is a location poster and a section line marker board on a 40" p. pine approx. 800 ft. north.

There is also a county line sign beside it. The sign and the 40" tree are about 10-20 ft. north of a primitive road.

Index File No. T. R. M. Tract or Surv. No. Cor.
R-1 45 30 E