

OREGON CORNER RESTORATION FORM

Section 1 Township 4S Range 31E

County Umatilla Date 11-30-87

CORNER DESIGNATION

E-23

- Condition Report Only
- Not Found
- Renewed
- Unrecorded
- Surveyed In
- Referenced Out

1/2 S1  
S12

Previous Renewals/Surveys, etc. None since original survey by Geo. S. Pershin, under Contract No. 373, dated September, 1880.

Monument(s) & Accessories Found: (Condition and Source)

Found unmarked 18" by 10" by 7" basalt stone, lying flat (it had tipped over), from which:

A rotted 22" ponderosa pine stump bears S60°E-33.3' (record S63°E-48 lks), with scribes visible on blaze fragments next to stump.

A rotted 18" ponderosa pine stump bears N48°W-51.5' (record N68°W-77 lks), with scribes visible on blaze fragments next to stump.

Both of the above stumps are original bearing trees. The corner position was reestablished at the base of the tipped original stone.

Monument Detail

Cap marked:

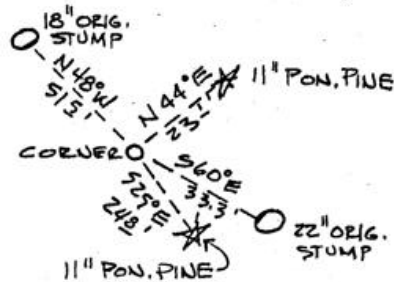
T4S R31E

1/2 S1  
S12

1987

PLS 1106

Sketch



Monument Set (Procedures and Description)

At the corner position described above, set a 1 1/2" by 30" flanged g.i.p. with 2 1/2" brass cap, marked as shown, 24" in the ground and surrounded with a mound of earth. Placed corner stone next to new monument. Set steel fence post east of corner and attached witness sign to the post.

New Accessories

A 11" ponderosa pine bears N44°E-23.1' scribed 1/2 S1 BT.

A 11" ponderosa pine bears S25°E-24.8' scribed 1/2 S12 BT.

Attached bearing object signs to original and new bearing trees with aluminum nails.

Location & Comments

Photo attached \_\_\_\_\_

Compass Declination 19°

Firm/Agency Bill Wells

RECEIVED BY \_\_\_\_\_

Surveyor \_\_\_\_\_

Umatilla County Surveyor \_\_\_\_\_

Address P.O. Box 1696

Date 12 87

Pendleton, Oregon

Rec'd By AA

Party Chief Bill Wells

No. 87-70-B

Notes \_\_\_\_\_

Witness Staebler/Gannon

Surveyor's Seal

