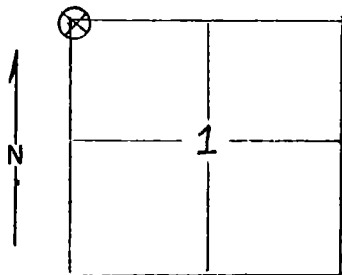


Index  
File No. A-21 CORNER RECORD (SEARCH) (Ref. FSM 7151.4) Tract or Survey No. \_\_\_\_\_ Cor. No. A-21  
T 4S R. 32E R.D. Ukiah County Umatilla  
Merid. Will N.F. Umatilla State Oregon

## CORNER DIAGRAM



## DESCRIBE CORNER MONUMENT FOUND

A stone 17"x12"x8" and it's 12" above ground in good condition. All the markings were was notches.

## DESCRIBE BEARING TREES OR OTHER OFFICIAL ACCESSORIES FOUND

A ponderosa pine bearing S23°E 54 lks. from corner is the only green tree left on corner. Has a good scar indicating b.t. A pine log has been cut down N42°E 52 lks has good visible b.t. on stump. A pine stump bearing S38 W 133 lks. has good visible b.t. on stump. All of these have a 6" red band painted around them and proper tags attached. About 3' SW of cornerstone put steel post with two attention signs attached. The stone is painted

## PHOTO IDENTIFICATION DATA

Photo No. \_\_\_\_\_  
Filed At. \_\_\_\_\_  
Object Ident. \_\_\_\_\_  
Ident. By \_\_\_\_\_  
*Signature*

## PLANE COORDINATE POSITION DATA

State \_\_\_\_\_ Zone \_\_\_\_\_  
X \_\_\_\_\_  
Y \_\_\_\_\_  
Estab. By \_\_\_\_\_  
*Agency*

## DESCRIBE CORNER LOCATION RELATIVE TO NEAR-BY FEATURES, ALSO HOW TO REACH CORNER

Signature  
MLC

Title  
For, Tech,

Division  
USFS

Headquarters  
Ukiah

Date  
6/6/77

7100-52 (3/68)