

OREGON CORNER RESTORATION FORM

SECTION 15 TOWNSHIP 5 NORTH RANGE 27 EAST

N-15

COUNTY : UMATILLA DATE 5/06

CORNER DESIGNATION

S 1/4 CORNER SECTION 15

X CONDITION REPORT ONLY

- NOT FOUND
- RENEWED
- UNCOVERED
- SURVEYED IN
- REFERENCED

PREVIOUS RENEWALS / SURVEYS, ETC.

ORIGINAL GLO SURVEY BY DAVENPORT UNDER CONTRACT #101 IN 1861. SET POST WITH MOUND AND CHARRED STAKE.

TOMPSON FOR SIMMONS 1967 SURVEY NO. D-43-AX

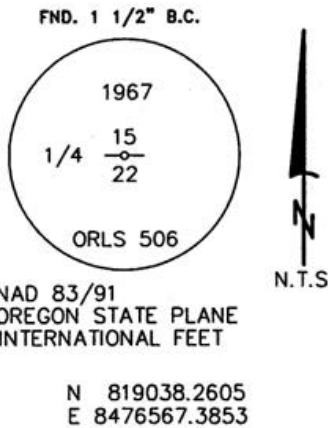
EDWARDS FOR SWANSON 1977 SURVEY NO. N-7-B

EDWARDS FOR KENNEY 1979 SURVEY NO. R-19-C

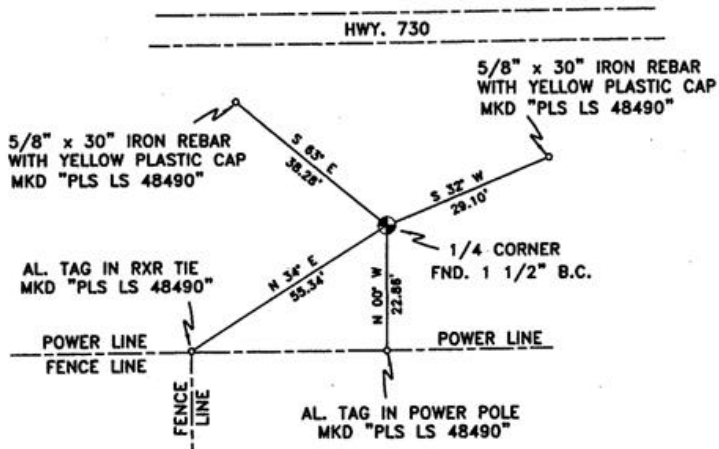
MONUMENTS AND ACCESSORIES FOUND: CONDITION AND SOURCE

1 1/2" B.C. 1/4 CORNER STAMPED ORLS 506

MONUMENT DETAIL



SKETCH



MONUMENT SET (PROCEDURES AND DESCRIPTION)

NEW ACCESSORIES FROM WHICH

- A 5/8" x 30" IRON REBAR WITH A YELLOW PLASTIC CAP MKD "PLS LS 48490" LIES N 32° E, 29.10 FEET.
- A 5/8" x 30" IRON REBAR WITH A YELLOW PLASTIC CAP MKD "PLS LS 48490" LIES N 63° W, 38.28 FEET.
- AN ALUMINUM TAG "PLS LS 48490" ON A POWER POLE LIES S 00° E, 22.86 FEET.
- AN ALUMINUM TAG "PLS LS 48490" ON A RXR TIE LIES S 34° W, 55.34 FEET.

LOCATION AND COMMENTS

FROM THE INTERSECTION OF HWY. 730 AND PLEASANT VIEW ROAD GO EAST ON HWY. 730 0.5 MILE TO CORNER. CORNER IS ON SOUTH SIDE OF HWY. 730 +/- 50'.

COMPASS DEC.

17.5 DEG EAST

FIRM/AGENCY

PRIMM LAND SURVEYING LLC
1340 N.E. 4TH P.O. BOX 1322
HERMISTON, OREGON 97838

PARTY CHIEF

BRIT L. PRIMM

NOTES

WITNESS

KEITH P. PRIMM
JOE L. PRIMM

SURVEYOR'S SEAL

REGISTERED
PROFESSIONAL
LAND SURVEYOR

Keith P. Primm

OREGON
JULY 12, 2005
KEITH P. PRIMM
48490

EXPIRATION DATE: 12/31/06

06-461-B