

OREGON CORNER RESTORATION FORM

SECTION 21 TOWNSHIP 5 NORTH RANGE 27 EAST
 COUNTY : UMATILLA DATE 5/06

P-13

CORNER DESIGNATION

E 1/4 CORNER SECTION 21

X CONDITION REPORT ONLY

- NOT FOUND
- RENEWED
- UNCOVERED
- SURVEYED IN
- REFERENCED

PREVIOUS RENEWALS / SURVEYS, ETC.

ORIGINAL GLO SURVEY BY DAVENPORT UNDER CONTRACT #101 IN 1861. SET POST WITH MOUND AND CHARRED STAKE.

EDWARDS FOR JONES 1977 SURVEY NO. M-71-A

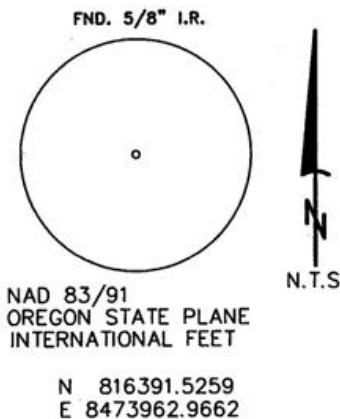
HARRIS FOR BATES 1979 SURVEY NO. Q-608-B

WELLS FOR MUNSEY 1998 SURVEY NO. 98-245-B

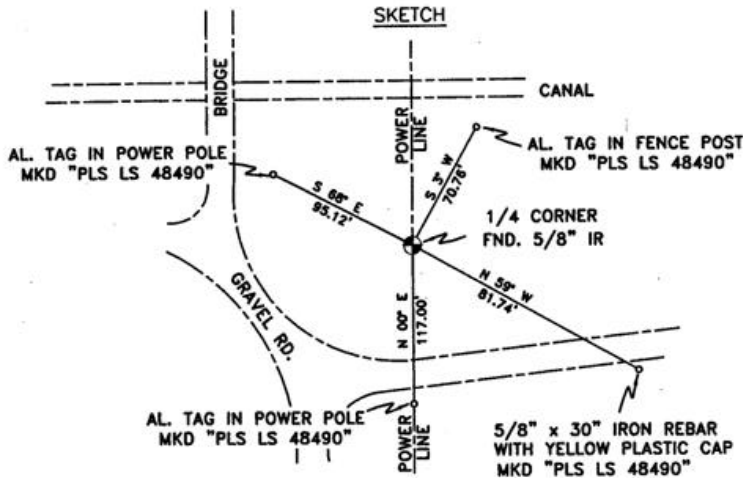
MONUMENTS AND ACCESSORIES FOUND: CONDITION AND SOURCE

5/8" IRON ROD 1/4 CORNER

MONUMENT DETAIL



SKETCH



MONUMENT SET (PROCEDURES AND DESCRIPTION)

NEW ACCESSORIES FROM WHICH

- AN ALUMINUM TAG "PLS LS 48490" ON A FENCE POST LIES N 3° E, 70.76 FEET.
- AN ALUMINUM TAG "PLS LS 48490" ON A POWER POLE LIES N 68° W, 95.12 FEET.
- AN ALUMINUM TAG "PLS LS 48490" ON A POWER POLE LIES S 00° W, 117.00 FEET.
- A 5/8" x 30" IRON REBAR WITH A YELLOW PLASTIC CAP MKD "PLS LS 48490" LIES S 59° E, 81.74 FEET.

LOCATION AND COMMENTS

FROM THE INTERSECTION OF HWY. 730 AND PLEASANT VIEW ROAD, GO SOUTH ON PLEASANT VIEW ROAD +/- 2000' ACROSS CANAL TO CORNER. CORNER FALLS NEAR INTERSECTION OF PLEASANT VIEW ROAD WITH AN OLD FARM ROAD +/- 60' SOUTH OF CANAL.

COMPASS DEC.

17.5 DEG EAST

FIRM/AGENCY

PRIMM LAND SURVEYING LLC
 1340 N.E. 4TH P.O. BOX 1322
 HERMISTON, OREGON 97838

PARTY CHIEF

BRIT L. PRIMM

NOTES

WITNESS

KEITH P. PRIMM
 JOE L. PRIMM

SURVEYOR'S SEAL

REGISTERED
 PROFESSIONAL
 LAND SURVEYOR

Keith P. Primm

OREGON
 JULY 12, 2005
 KEITH P. PRIMM
 48490

EXPIRATION DATE: 12/31/06

06-461-B