

OREGON CORNER RESTORATION FORM

SECTION 22 TOWNSHIP 5 NORTH RANGE 27 EAST

P-17

COUNTY : UMATILLA DATE 5/06

CORNER DESIGNATION

E 1/4 CORNER SECTION 22

X CONDITION REPORT ONLY

- NOT FOUND
- RENEWED
- UNCOVERED
- SURVEYED IN
- REFERENCED

PREVIOUS RENEWALS / SURVEYS, ETC.

ORIGINAL GLO SURVEY BY DAVENPORT UNDER CONTRACT #101 IN 1861. SET POST WITH MOUND AND CHARRED STAKE.

EDWARDS FOR JONES 1977 SURVEY NO. M-71-A

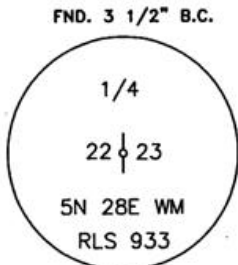
KRUMBEIN FOR DACK 1975 SURVEY NO. J-102-A

EDWARDS FOR KENNEY 1979 SURVEY NO. R-19-C

MONUMENTS AND ACCESSORIES FOUND: CONDITION AND SOURCE

3 1/2" B.C. 1/4 CORNER STAMPED RLS 933

MONUMENT DETAIL

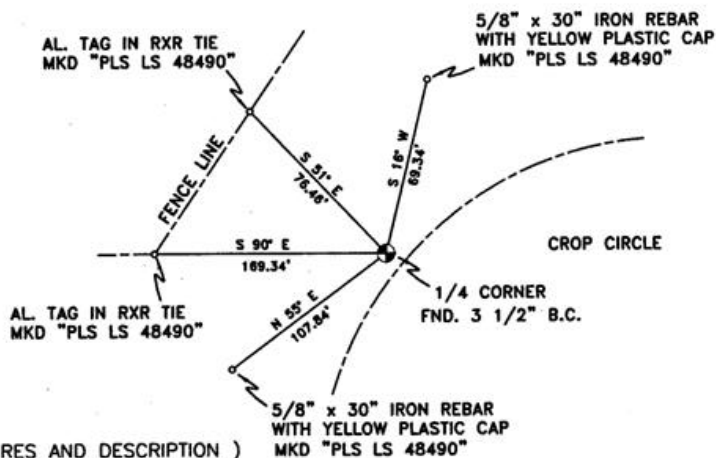


NAD 83/91
OREGON STATE PLANE
INTERNATIONAL FEET

N 816427.1405
E 8479246.2417



SKETCH



MONUMENT SET (PROCEDURES AND DESCRIPTION)

NEW ACCESSORIES FROM WHICH

- A 5/8" x 30" IRON REBAR WITH A YELLOW PLASTIC CAP MKD "PLS LS 48490" LIES N 16° E, 69.34 FEET.
- A 5/8" x 30" IRON REBAR WITH A YELLOW PLASTIC CAP MKD "PLS LS 48490" LIES S 55° W, 107.84 FEET.
- AN ALUMINUM TAG "PLS LS 48490" ON A RXR TIE LIES N 90° W, 169.34 FEET.
- AN ALUMINUM TAG "PLS LS 48490" ON A RXR TIE LIES N 51° W, 76.46 FEET.

LOCATION AND COMMENTS

FROM THE INTERSECTION OF HWY. 730 AND PLEASANT VIEW ROAD GO SOUTH ON PLEASANT VIEW ROAD +/- 2000' ACROSS CANAL THEN GO EAST 1 MILE TO CORNER. CORNER FALLS AT EDGE OF CROP CIRCLE.

COMPASS DEC.

17.5 DEG EAST

FIRM/AGENCY

PRIMM LAND SURVEYING LLC
1340 N.E. 4TH P.O. BOX 1322
HERMISTON, OREGON 97838

PARTY CHIEF

BRIT L. PRIMM

NOTES

WITNESS

KEITH P. PRIMM
JOE L. PRIMM

SURVEYOR'S SEAL

REGISTERED
PROFESSIONAL
LAND SURVEYOR

Keith P. Primm

OREGON
JULY 12, 2005
KEITH P. PRIMM
48490

EXPIRATION DATE: 12/31/06

06-461-B