

# OREGON CORNER RESTORATION FORM

SECTION 24 TOWNSHIP 5 NORTH RANGE 27 EAST  
 COUNTY : UMATILLA DATE 5/06

P-25

CORNER DESIGNATION

E 1/4 CORNER SECTION 24

X CONDITION REPORT ONLY

- NOT FOUND
- RENEWED
- UNCOVERED
- SURVEYED IN
- REFERENCED

PREVIOUS RENEWALS / SURVEYS, ETC.

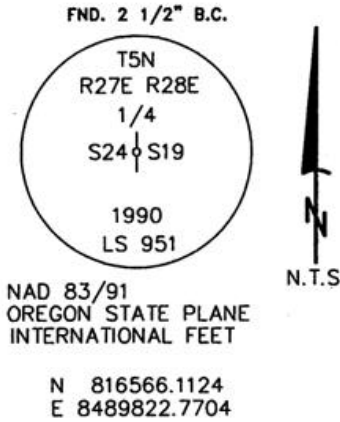
ORIGINAL GLO SURVEY BY DAVENPORT UNDER CONTRACT #101 IN 1861. SET POST WITH MOUND AND CHARRED STAKE.

EDWARDS FOR UMATILLA COUNTY 1990 SURVEY NO. 91-01-B

MONUMENTS AND ACCESSORIES FOUND: CONDITION AND SOURCE

2 1/2" B.C. 1/4 CORNER STAMPED LS 951  
 AN ALUMINUM TAG 951 ON A POWER POLE LIES S 26° E, 149.08 FEET.  
 AN ALUMINUM TAG 951 ON A RXR TIE LIES S 62° E, 24.54 FEET.

MONUMENT DETAIL



NAD 83/91  
 OREGON STATE PLANE  
 INTERNATIONAL FEET

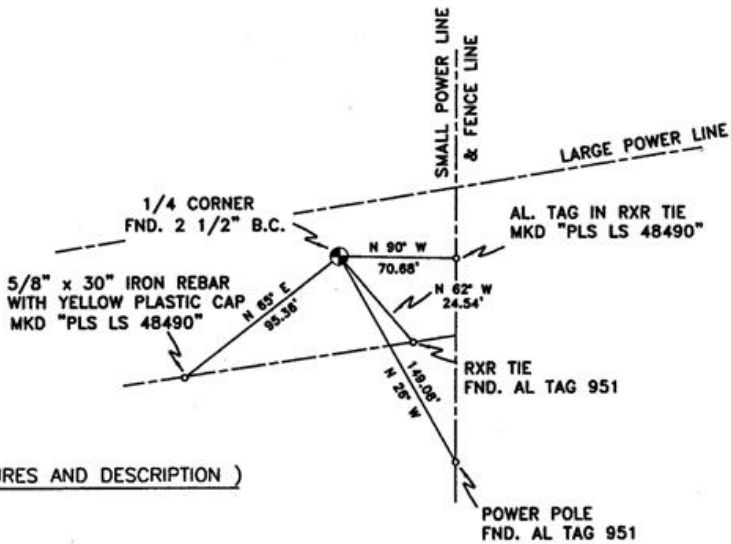
N 816566.1124  
 E 8489822.7704

MONUMENT SET ( PROCEDURES AND DESCRIPTION )

NEW ACCESSORIES FROM WHICH

AN ALUMINUM TAG "PLS LS 48490" ON A RXR TIE LIES S 90° E, 70.68 FEET.  
 A 5/8" x 30" IRON REBAR WITH A YELLOW PLASTIC CAP MKD "PLS LS 48490" LIES S 65° W, 95.36 FEET.

SKETCH



LOCATION AND COMMENTS

FROM THE INTERSECTION OF POWER LINE ROAD AND RADAR ROAD, GO WEST 1.2 MILES TO POWER LINE, GO NORTH ALONG POWER LINE 0.5 MILES TO CORNER, CORNER IS +/- 75 FEET WEST OF POWER LINE.

COMPASS DEC.

17.5 DEG EAST

FIRM/AGENCY

PRIMM LAND SURVEYING LLC  
 1340 N.E. 4TH P.O. BOX 1322  
 HERMISTON, OREGON 97838

PARTY CHIEF

BRIT L. PRIMM

NOTES

WITNESS

KEITH P. PRIMM  
 JOE L. PRIMM

SURVEYOR'S SEAL

REGISTERED  
 PROFESSIONAL  
 LAND SURVEYOR

*Keith P. Primm*

OREGON  
 JULY 12, 2005  
 KEITH P. PRIMM  
 48490

EXPIRATION DATE: 12/31/06

06-461-B