

# OREGON CORNER RESTORATION FORM

SECTION 22 TOWNSHIP 5 NORTH RANGE 27 EAST  
 COUNTY : UMATILLA DATE 5/06

R-15

CORNER DESIGNATION

S 1/4 CORNER SECTION 22

CONDITION REPORT ONLY  
 NOT FOUND  
 RENEWED  
 UNCOVERED  
 SURVEYED IN  
 REFERENCED

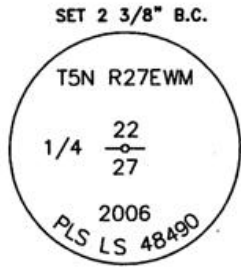
PREVIOUS RENEWALS / SURVEYS, ETC.

ORIGINAL GLO SURVEY BY DAVENPORT UNDER CONTRACT #101 IN 1861. SET POST WITH MOUND AND CHARRED STAKE.

MONUMENTS AND ACCESSORIES FOUND: CONDITION AND SOURCE

NONE

MONUMENT DETAIL

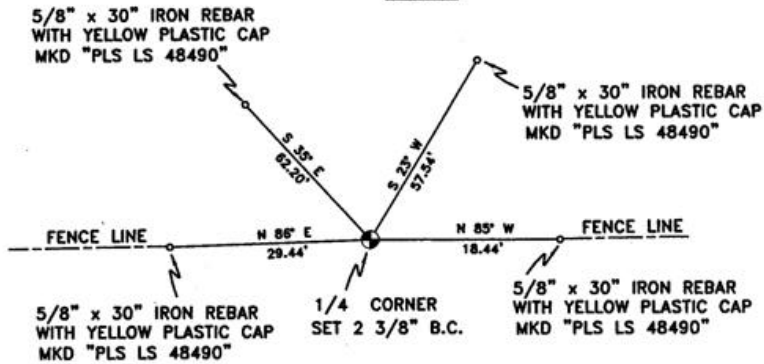


NAD 83/91  
 OREGON STATE PLANE  
 INTERNATIONAL FEET

N 813781.2583  
 E 8476639.6947

N.T.S.

SKETCH



MONUMENT SET ( PROCEDURES AND DESCRIPTION )

2 3/8" B.C. 1/4 CORNER STAMPED AS ABOVE, RESET AT SINGLE PROPORTIONATE MEASUREMENTS BETWEEN FOUND EAST AND FOUND WEST SECTION CORNERS.

NEW ACCESSORIES FROM WHICH

- A 5/8" x 30" IRON REBAR WITH A YELLOW PLASTIC CAP MKD "PLS LS 48490" LIES N 23° E, 57.54 FEET.
- A 5/8" x 30" IRON REBAR WITH A YELLOW PLASTIC CAP MKD "PLS LS 48490" LIES S 85° E, 18.44 FEET.
- A 5/8" x 30" IRON REBAR WITH A YELLOW PLASTIC CAP MKD "PLS LS 48490" LIES S 86° W, 29.44 FEET.
- A 5/8" x 30" IRON REBAR WITH A YELLOW PLASTIC CAP MKD "PLS LS 48490" LIES N 35° W, 62.20 FEET.

LOCATION AND COMMENTS

FROM THE INTERSECTION OF HWY. 730 AND PLEASANT VIEW ROAD, GO SOUTH ON PLEASANT VIEW ROAD +/- 2000' ACROSS CANAL, CONTINUE SOUTH 0.5 MILES THEN GO EAST 0.5 MILES TO CORNER. CORNER FALLS IN AN E-W FENCE LINE NEAR SMALL GROUP OF TREES.

COMPASS DEC.

17.5 DEG EAST

FIRM/AGENCY

PRIMM LAND SURVEYING LLC  
 1340 N.E. 4TH P.O. BOX 1322  
 HERMISTON, OREGON 97838

PARTY CHIEF

BRIT L. PRIMM

NOTES

WITNESS

KEITH P. PRIMM  
 JOE L. PRIMM

SURVEYOR'S SEAL

REGISTERED  
 PROFESSIONAL  
 LAND SURVEYOR

*Keith P. Primm*

OREGON  
 JULY 12, 2005  
 KEITH P. PRIMM  
 48490

EXPIRATION DATE: 12/31/06

06-461-B