

OREGON CORNER RESTORATION FORM

SECTION 22 TOWNSHIP 5 NORTH RANGE 27 EAST

R-17

COUNTY : UMATILLA DATE 5/06

CORNER DESIGNATION

SE CORNER SECTION 22

CONDITION REPORT ONLY

NOT FOUND

RENEWED

UNCOVERED

SURVEYED IN

REFERENCED

PREVIOUS RENEWALS / SURVEYS, ETC.

ORIGINAL GLO SURVEY BY DAVENPORT UNDER CONTRACT #101 IN 1861. SET POST WITH MOUND AND CHARRED STAKE.

EDWARDS FOR JONES 1977 SURVEY NO. M-71-A

KRUMBEIN FOR DACK 1975 SURVEY NO. J-102-A

KRUMBEIN FOR BAKER-ROGERS 1973 SURVEY NO. I-16-C

MONUMENTS AND ACCESSORIES FOUND: CONDITION AND SOURCE

2 3/8" B.C. SECTION CORNER STAMPED RPE 77XX

MONUMENT DETAIL



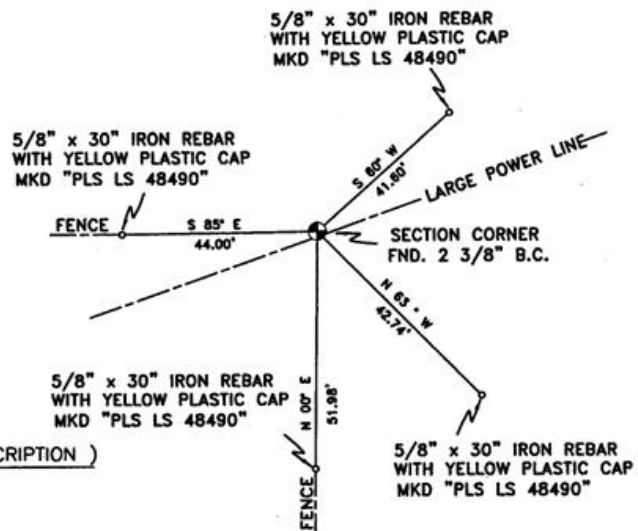
NAD 83/91
OREGON STATE PLANE
INTERNATIONAL FEET

N 813801.2119
E 8479280.9302



MONUMENT SET (PROCEDURES AND DESCRIPTION)

SKETCH



NEW ACCESSORIES FROM WHICH

- A 5/8" x 30" IRON REBAR WITH A YELLOW PLASTIC CAP MKD "PLS LS 48490" LIES N 60° E, 41.60 FEET.
- A 5/8" x 30" IRON REBAR WITH A YELLOW PLASTIC CAP MKD "PLS LS 48490" LIES S 63° E, 42.74 FEET.
- A 5/8" x 30" IRON REBAR WITH A YELLOW PLASTIC CAP MKD "PLS LS 48490" LIES S 00° W, 51.98 FEET.
- A 5/8" x 30" IRON REBAR WITH A YELLOW PLASTIC CAP MKD "PLS LS 48490" LIES N 85° W, 44.00 FEET.

LOCATION AND COMMENTS

FROM THE INTERSECTION OF POWER LINE ROAD AND PTL LANE GO WEST ON PTL LANE 3.2 MILES TO A N-S FENCE LINE THEN GO NORTH 1 MILE ALONG FENCE LINE. CORNER FALLS UNDER LARGE E-W POWER LINE, IN FENCE CORNER.

COMPASS DEC.

17.5 DEG EAST

FIRM/AGENCY

PRIMM LAND SURVEYING LLC
1340 N.E. 4TH P.O. BOX 1322
HERMISTON, OREGON 97838

PARTY CHIEF

BRIT L. PRIMM

NOTES

WITNESS

KEITH P. PRIMM
JOE L. PRIMM

SURVEYOR'S SEAL

REGISTERED
PROFESSIONAL
LAND SURVEYOR

Keith P. Primm

OREGON
JULY 12, 2005
KEITH P. PRIMM
48490

EXPIRATION DATE: 12/31/06

06-461-B