

# OREGON CORNER RESTORATION FORM

SECTION 27 TOWNSHIP 5 NORTH RANGE 27 EAST  
 COUNTY : UMATILLA DATE 5/06

T-17

CORNER DESIGNATION

E 1/4 CORNER SECTION 27

- CONDITION REPORT ONLY  
 NOT FOUND  
 RENEWED  
 UNCOVERED  
 SURVEYED IN  
 REFERENCED

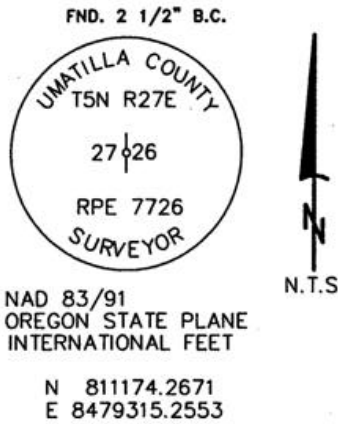
PREVIOUS RENEWALS / SURVEYS, ETC.

ORIGINAL GLO SURVEY BY DAVENPORT UNDER CONTRACT #101 IN 1861. SET POST WITH MOUND AND CHARRED STAKE.  
 KRUMBEIN FOR BAKER-ROGERS 1973 SURVEY NO. 1-16-C

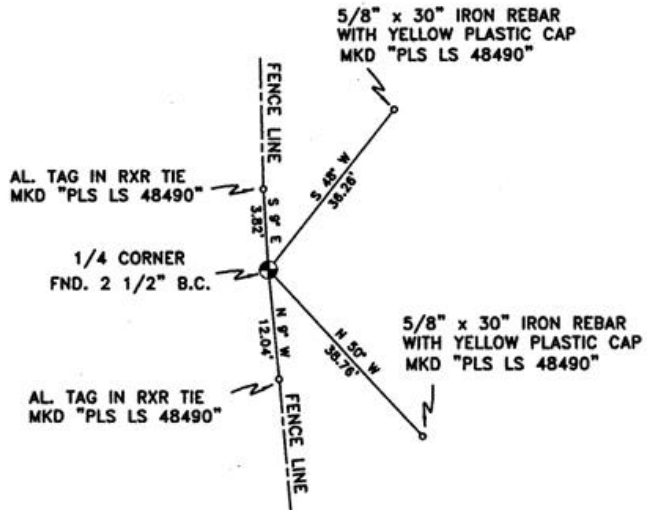
MONUMENTS AND ACCESSORIES FOUND: CONDITION AND SOURCE

2 1/2" B.C. 1/4 CORNER STAMPED RPE 7726

MONUMENT DETAIL



SKETCH



MONUMENT SET ( PROCEDURES AND DESCRIPTION )

NEW ACCESSORIES FROM WHICH

- AN ALUMINUM TAG "PLS LS 48490" ON A RXR TIE LIES N 9' W, 3.82 FEET.
- AN ALUMINUM TAG "PLS LS 48490" ON A RXR TIE LIES S 9' E, 12.04 FEET.
- A 5/8" x 30" IRON REBAR WITH A YELLOW PLASTIC CAP MKD "PLS LS 48490" LIES S 50' E, 38.76 FEET.
- A 5/8" x 30" IRON REBAR WITH A YELLOW PLASTIC CAP MKD "PLS LS 48490" LIES N 48' E, 36.26 FEET.

LOCATION AND COMMENTS

FROM THE INTERSECTION OF POWER LINE ROAD AND PTL LANE, GO WEST ON PTL LANE 3.2 MILES TO A N-S FENCE LINE THEN GO NORTH 0.5 MILES ALONG FENCE LINE TO CORNER. CORNER FALLS IN FENCE LINE

COMPASS DEC.

17.5 DEG EAST

FIRM/AGENCY

PRIMM LAND SURVEYING LLC  
 1340 N.E. 4TH P.O. BOX 1322  
 HERMISTON, OREGON 97838

PARTY CHIEF

BRIT L. PRIMM

NOTES

WITNESS

KEITH P. PRIMM  
 JOE L. PRIMM

SURVEYOR'S SEAL

REGISTERED  
 PROFESSIONAL  
 LAND SURVEYOR

*Keith P. Primm*

OREGON  
 JULY 12, 2005  
 KEITH P. PRIMM  
 48490

EXPIRATION DATE: 12/31/06

06-461-B