

OREGON CORNER RESTORATION FORM

SECTION 25 TOWNSHIP 5 NORTH RANGE 27 EAST

T-25

COUNTY : UMATILLA DATE 5/06

CORNER DESIGNATION

E 1/4 CORNER SECTION 25

CONDITION REPORT ONLY

NOT FOUND

RENEWED

UNCOVERED

SURVEYED IN

REFERENCED

PREVIOUS RENEWALS / SURVEYS, ETC.

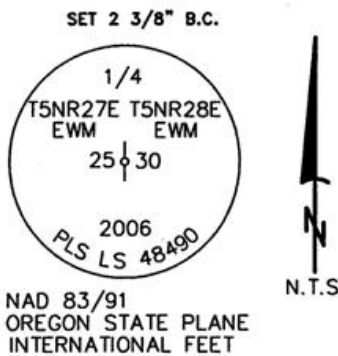
ORIGINAL GLO SURVEY BY DAVENPORT UNDER CONTRACT #101 IN 1861. SET POST WITH MOUND AND CHARRED STAKE.

EDWARDS FOR UMATILLA COUNTY 1990 SURVEY NO. 91-01-B

MONUMENTS AND ACCESSORIES FOUND: CONDITION AND SOURCE

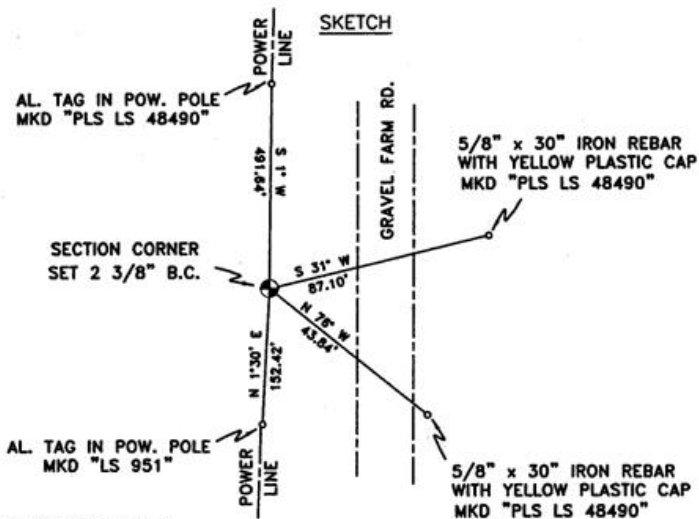
2 1/2" B.C. 1/4 CORNER (LS 951) LYING ON GROUND, BURIED AT BASE OF RESET MONUMENT.

MONUMENT DETAIL



NAD 83/91
OREGON STATE PLANE
INTERNATIONAL FEET

N 811308.9237
E 8489884.9201



MONUMENT SET (PROCEDURES AND DESCRIPTION)

2 3/8" B.C. 1/4 CORNER STAMPED AS ABOVE, RESET AT SINGLE PROPORTIONATE MEASUREMENTS BETWEEN FOUND NORTH AND FOUND SOUTH SECTION CORNERS.

NEW ACCESSORIES FROM WHICH

A 5/8" x 30" IRON REBAR WITH A YELLOW PLASTIC CAP MKD "PLS LS 48490" LIES N 31° E, 87.10 FEET.

A 5/8" x 30" IRON REBAR WITH A YELLOW PLASTIC CAP MKD "PLS LS 48490" LIES S 76° E, 43.84 FEET.

AN ALUMINUM TAG "LS 951" ON A POWER POLE LIES S 1°30' W, 152.42 FEET.

AN ALUMINUM TAG "PLS LS 48490" ON A POWER POLE LIES N 1° E, 491.64 FEET.

LOCATION AND COMMENTS

FROM THE INTERSECTION OF POWER LINE ROAD AND PTL LANE GO WEST 1.2 MILES TO LARGE POWER LINE, GO NORTH UP LARGE POWER LINE 0.5 MILES TO CORNER.

COMPASS DEC.

17.5 DEG EAST

FIRM/AGENCY

PRIMM LAND SURVEYING LLC
1340 N.E. 4TH P.O. BOX 1322
HERMISTON, OREGON 97838

PARTY CHIEF

BRIT L. PRIMM

NOTES

WITNESS

KEITH P. PRIMM
JOE L. PRIMM

SURVEYOR'S SEAL

REGISTERED
PROFESSIONAL
LAND SURVEYOR

Keith P. Primm

OREGON
JULY 12, 2005
KEITH P. PRIMM
48490

EXPIRATION DATE: 12/31/06

06-461-B