

OREGON CORNER RESTORATION FORM

SECTION 15 TOWNSHIP 5 NORTH RANGE 28 EAST

J-15

COUNTY : UMATILLA DATE 6/04

CORNER DESIGNATION

NORTH 1/4 CORNER SECTION 15

- CONDITION REPORT ONLY
- NOT FOUND
- RENEWED
- UNCOVERED
- SURVEYED IN
- REFERENCED

PREVIOUS RENEWALS / SURVEYS, ETC.

ORIGINAL GLO SURVEY BY DAVENPORT UNDER CONTRACT #101 IN 1861. SET POST WITH MOUND AND CHARRED STAKE.

EDWARDS REMONUMENTED IN 1988 SURVEY # 88-45-C. SET 2 3/8" BRASS CAP.

WELLS RECOVERED THE MONUMENT AND REFERENCED SAME IN 1998 SURVEY # 98-101-C.

MONUMENTS AND ACCESSORIES FOUND: CONDITION AND SOURCE

A 2 3/8" BRASS CAP (SEE MONUMENT DETAIL)

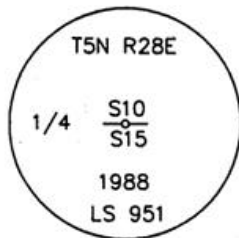
A 5/8" IRON ROD WITH A YELLOW PLASTIC CAP MKD "OR PLS 1106, WA PLS 17372" LIES N 45°00'00" E, 48.46 FEET.

A 5/8" IRON ROD WITH A YELLOW PLASTIC CAP MKD "OR PLS 1106, WA PLS 17372" LIES S 54°00'00" E, 45.76 FEET.

A 5/8" IRON ROD WITH A YELLOW PLASTIC CAP MKD "OR PLS 1106, WA PLS 17372" LIES S 32°00'00" W, 52.50 FEET.

A 5/8" IRON ROD WITH A YELLOW PLASTIC CAP MKD "OR PLS 1106, WA PLS 17372" LIES N 51°00'00" W, 44.38 FEET.

MONUMENT DETAIL

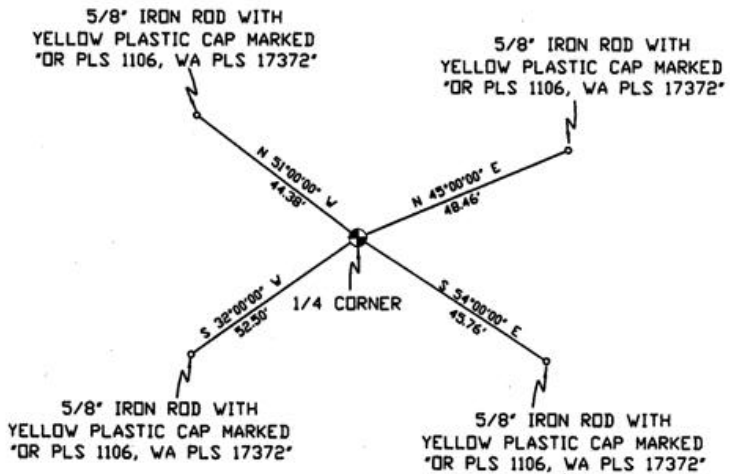


NAD 83/91
OREGON STATE PLANE
INTERNATIONAL FEET

824849.65
8508230.18



SKETCH



MONUMENT SET (PROCEDURES AND DESCRIPTION)

NEW ACCESSORIES FROM WHICH

LOCATION AND COMMENTS

COMPASS DEC.

FIRM/AGENCY

PRIMM LAND SURVEYING LLC
P.O. BOX 1322
HERMISTON, OREGON 97838

PARTY CHIEF

KEITH P. PRIMM

NOTES

WITNESS

BRIT L. PRIMM

SURVEYOR'S SEAL

REGISTERED
PROFESSIONAL
LAND SURVEYOR

Brit L. Primm
OREGON
JULY 13, 1999
BRIT L. PRIMM
48509

EXPIRATION DATE: 12/31/04

Aug 18/04

NU. 100 R