

OREGON CORNER RESTORATION FORM

SECTION 15 TOWNSHIP 5 NORTH RANGE 28 EAST

J-17

COUNTY : UMATILLA DATE 6/04

CORNER DESIGNATION

NE CORNER SECTION 15

CONDITION REPORT ONLY
 NOT FOUND
 RENEWED
 UNCOVERED
 SURVEYED IN
 REFERENCED

PREVIOUS RENEWALS / SURVEYS, ETC.

ORIGINAL GLO SURVEY BY DAVENPORT UNDER CONTRACT #101 IN 1861. SET POST WITH MOUND AND CHARRED STAKE.

CORPS OF ENGINEERS RETRACEMENT SURVEY 1947. FOUND 1" AXLE.

KRUMBEIN REESTABLISHED IT IN 1972 SURVEY # H-210-A. SET BRASS CAP.

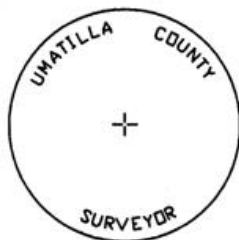
WELLS RECOVERD MONUMENT AND SET ACCESSORIES IN 1998 SURVEY # 98-101-C.

MONUMENTS AND ACCESSORIES FOUND: CONDITION AND SOURCE

A 2 1/2" BRASS CAP (SEE MONUMENT DETAIL)

A BRASS WASHER "PLS 1106" IN A 24" SPRUCE TREE LIES S 30°00'00" W, 105.62 FEET.

MONUMENT DETAIL

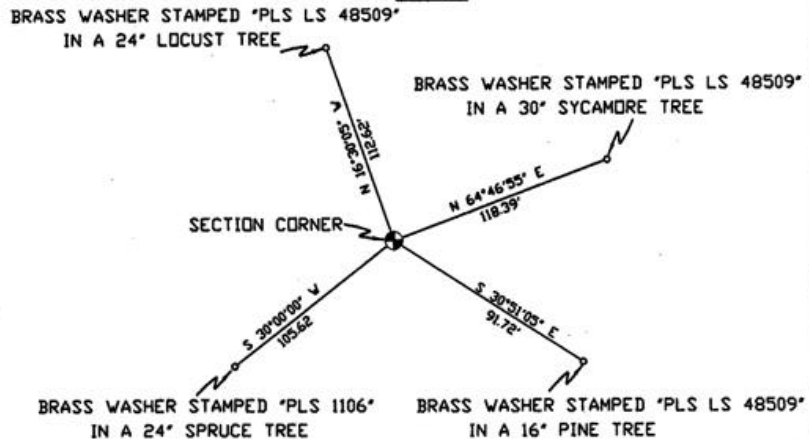


NAD 83/91
 OREGON STATE PLANE
 INTERNATIONAL FEET

824885.22
 8510883.26



SKETCH



MONUMENT SET (PROCEDURES AND DESCRIPTION)

NEW ACCESSORIES FROM WHICH

AN ALUMINUM TAG "PLS LS 48509" IN A 24" LOCUST TREE LIES N 16°30'05" W, 112.62 FEET.
 AN ALUMINUM TAG "PLS LS 48509" IN A 30" SYCAMORE TREE LIES N 64°46'55" E, 118.39 FEET.
 AN ALUMINUM TAG "PLS LS 48509" IN A 16" PINE TREE LIES S 30°51'05" E, 91.72 FEET.

LOCATION AND COMMENTS

CORNER FALLS IN THE 3RD FAIRWAY OF GOLF COURSE.

COMPASS DEC.

FIRM/AGENCY
 PRIMM LAND SURVEYING LLC
 P.O. BOX 1322
 HERMISTON, OREGON 97838

PARTY CHIEF
 KEITH P. PRIMM

NOTES

WITNESS
 BRIT L. PRIMM

SURVEYOR'S SEAL

REGISTERED
 PROFESSIONAL
 LAND SURVEYOR

Brit L. Primm
 OREGON
 JULY 13, 1999
 BRIT L. PRIMM
 48509

EXPIRATION DATE: 12/31/04

Aug/18/04

04-155-B