

OREGON CORNER RESTORATION FORM

SECTION 13 TOWNSHIP 5 NORTH RANGE 27 EAST

N-25

COUNTY : UMATILLA DATE 5/06

CORNER DESIGNATION

SE CORNER SECTION 13

CONDITION REPORT ONLY

NOT FOUND

RENEWED

UNCOVERED

SURVEYED IN

REFERENCED

PREVIOUS RENEWALS / SURVEYS, ETC.

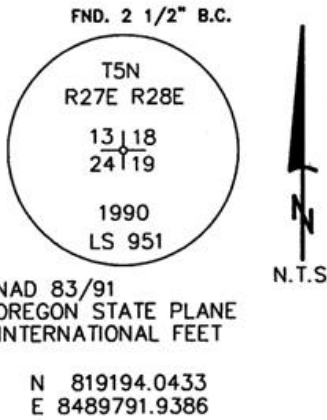
ORIGINAL GLO SURVEY BY DAVENPORT UNDER CONTRACT #101 IN 1861. SET POST WITH MOUND AND CHARRED STAKE.

EDWARDS FOR UMATILLA COUNTY 1990 SURVEY NO. 91-01-B

MONUMENTS AND ACCESSORIES FOUND: CONDITION AND SOURCE

2 1/2" B.C. SECTION CORNER STAMPED LS 951

MONUMENT DETAIL

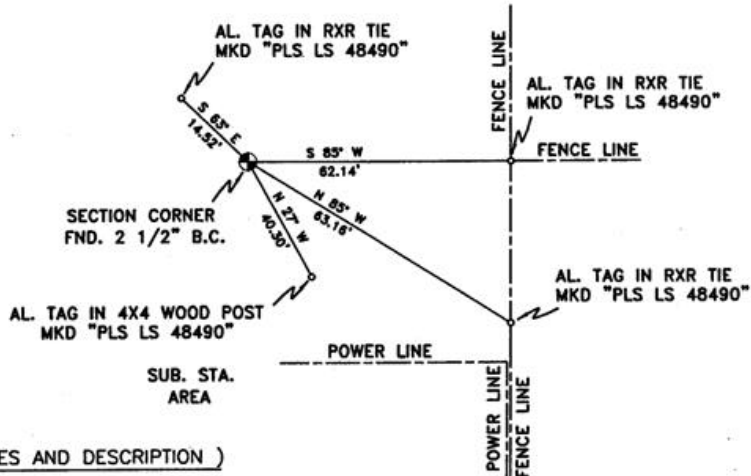


NAD 83/91
OREGON STATE PLANE
INTERNATIONAL FEET

N 819194.0433
E 8489791.9386

MONUMENT SET (PROCEDURES AND DESCRIPTION)

SKETCH



NEW ACCESSORIES FROM WHICH

AN ALUMINUM TAG "PLS LS 48490" ON A RXR TIE LIES N 85' E, 62.14 FEET.

AN ALUMINUM TAG "PLS LS 48490" ON A RXR TIE LIES S 85' E, 63.16 FEET.

AN ALUMINUM TAG "PLS LS 48490" ON A 4X4 WOOD POST LIES S 27' E, 40.30 FEET.

AN ALUMINUM TAG "PLS LS 48490" ON A RXR TIE LIES N 63' W, 14.52 FEET.

LOCATION AND COMMENTS

FROM THE INTERSECTION OF POWER LINE ROAD AND RADAR ROAD, GO WEST 1.2 MILES TO POWER LINE, GO NORTH ALONG POWER LINE TO SUBSTATION, CORNER IS +/- 150 FEET NORTH OF SUBSTATION.

COMPASS DEC.

17.5 DEG EAST

FIRM/AGENCY

PRIMM LAND SURVEYING LLC
1340 N.E. 4TH P.O. BOX 1322
HERMISTON, OREGON 97838

PARTY CHIEF

BRIT L. PRIMM

NOTES

WITNESS

KEITH P. PRIMM

JOE L. PRIMM

SURVEYOR'S SEAL

REGISTERED
PROFESSIONAL
LAND SURVEYOR

Keith P. Primm

OREGON
JULY 12, 2005
KEITH P. PRIMM
48490

EXPIRATION DATE: 12/31/06

06-461-B