

OREGON CORNER RESTORATION FORM

SECTION 21 TOWNSHIP 5N RANGE 28E P-9

COUNTY: UMATILLA DATE 1/90

CORNER DESIGNATION

W 1/4 Corner

CONDITION REPORT ONLY
 NOT FOUND
 RENEWED
 UNRECORDED
 SURVEYED IN
 REFERENCED OUT

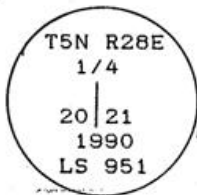
PREVIOUS RENEWALS/SURVEYS, ETC.

Original survey by Davenport in 1861, under Contract # 101.

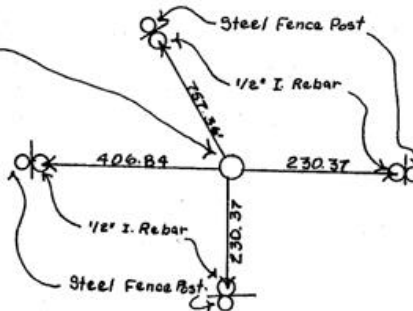
MONUMENTS & ACCESSORIES FOUND: Condition and Source

No evidence found.

MONUMENT DETAIL



SKETCH



MONUMENT SET (PROCEDURES AND DESCRIPTION)

By single proportion set a 2 3/8" Brass Cap attached to the top of a 1"x30" Galv. pipe. Cap is 0.4 ft. above surface of ground and in a row of grapes.

NEW ACCESSORIES

From which Set 4 1/2"x24" I. Rebar with Alum. Caps stamped 951. Set a steel fence post behind each of these 1/2" rebars with Bearing Object signs attached. They bear N 30° 36' W 757.36 feet, West 406.84 feet, South and East 230.37 ft. from corner.

LOCATION & COMMENTS

From the intersection of Powerline Rd. with the West Extension Irrigation canal, follow this canal in a Southerly direction approx. 0.95 mi. then go E approx. 450 ft. to corner.

COMPASS DEC.
FIRM EDWARDS SURVEYING
P.O. BOX 763, HERMISTON,
OREGON, 97838
PARTY CHIEF D. EDWARDS

NOTES
WITNESS J. COPPOCK

SURVEYOR'S SEAL

REGISTERED
PROFESSIONAL
LAND SURVEYOR

G. Dennis Edwards

OREGON
JULY 16, 1971
G. DENNIS EDWARDS
951

RECEIVED BY

Umatilla County Surveyor

Date 1-91

Rec'd By KA

No. 91-01-B