

OREGON CORNER RESTORATION FORM

SECTION 36 TOWNSHIP 5 NORTH RANGE 27 EAST
 COUNTY : UMATILLA DATE 5/06

Z-25

CORNER DESIGNATION

SE CORNER SECTION 36 STANDARD CORNER

- CONDITION REPORT ONLY
 NOT FOUND
 RENEWED
 UNCOVERED
 SURVEYED IN
 REFERENCED

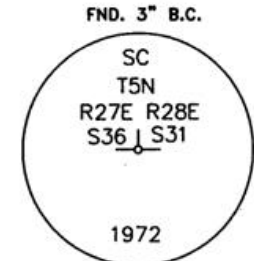
PREVIOUS RENEWALS / SURVEYS, ETC.

ORIGINAL GLO SURVEY BY DAVENPORT UNDER CONTRACT #101 IN 1861. SET POST WITH MOUND AND CHARRED STAKE.
 DEPENDENT RESURVEY BY GOULD OF THE FIRST STANDARD PARALLEL NORTH, THROUGH RANGE 27 EAST AND EAST BOUNDARY OF T.4N. R.27E.W.M. 1941
 STAEBLER FOR STONE 1972 SURVEY NO. H-106-B
 KRUMBEIN FOR BAKER-ROGERS 1973 SURVEY NO. I-16-C
 EDWARDS FOR UMATILLA COUNTY 1990 SURVEY NO. 91-01-B

MONUMENTS AND ACCESSORIES FOUND: CONDITION AND SOURCE

3" B.C. SECTION CORNER STANDARD CORNER

MONUMENT DETAIL

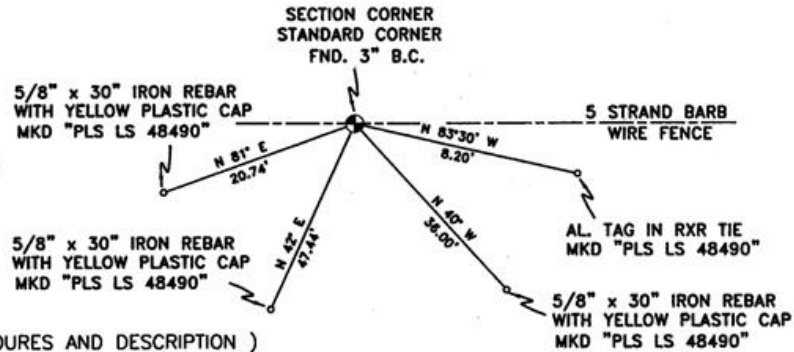


NAD 83/91
 OREGON STATE PLANE
 INTERNATIONAL FEET

N 803423.4753
 E 8489977.8157



SKETCH



MONUMENT SET (PROCEDURES AND DESCRIPTION)

NEW ACCESSORIES FROM WHICH

- AN ALUMINUM TAG "PLS LS 48490" ON A RXR TIE LIES S 83°30' E, 8.20 FEET.
- A 5/8" x 30" IRON REBAR WITH A YELLOW PLASTIC CAP MKD "PLS LS 48490" LIES S 40° E, 36.00 FEET.
- A 5/8" x 30" IRON REBAR WITH A YELLOW PLASTIC CAP MKD "PLS LS 48490" LIES S 42° W, 47.44 FEET.
- A 5/8" x 30" IRON REBAR WITH A YELLOW PLASTIC CAP MKD "PLS LS 48490" LIES S 81° W, 20.74 FEET.

LOCATION AND COMMENTS

FROM THE INTERSECTION OF POWER LINE ROAD AND PTL LANE GO WEST 1.2 MILES TO A LARGE POWER LINE, GO SOUTH DOWN LARGE POWER LINE 1.0 MILES TO AN E-W FENCE LINE, GO EAST 0.1 MILE TO CORNER IN FENCELINE.

COMPASS DEC.

17.5 DEG EAST

FIRM/AGENCY

PRIMM LAND SURVEYING LLC
 1340 N.E. 4TH P.O. BOX 1322
 HERMISTON, OREGON 97838

PARTY CHIEF

BRIT L. PRIMM

NOTES

WITNESS

KEITH P. PRIMM
 JOE L. PRIMM

SURVEYOR'S SEAL

REGISTERED
 PROFESSIONAL
 LAND SURVEYOR

Keith P. Primm

OREGON
 JULY 12, 2005
 KEITH P. PRIMM
 48490

EXPIRATION DATE: 12/31/06

06-461-B