

OREGON CORNER RESTORATION FORM

SECTION 18 TOWNSHIP 5N RANGE 29E J-5

COUNTY: UMATILLA DATE 7/91
Revised 10/91

CORNER DESIGNATION

NE Corner

CONDITION REPORT ONLY
 NOT FOUND
 RENEWED
 UNRECORDED
 SURVEYED IN
 REFERENCED OUT

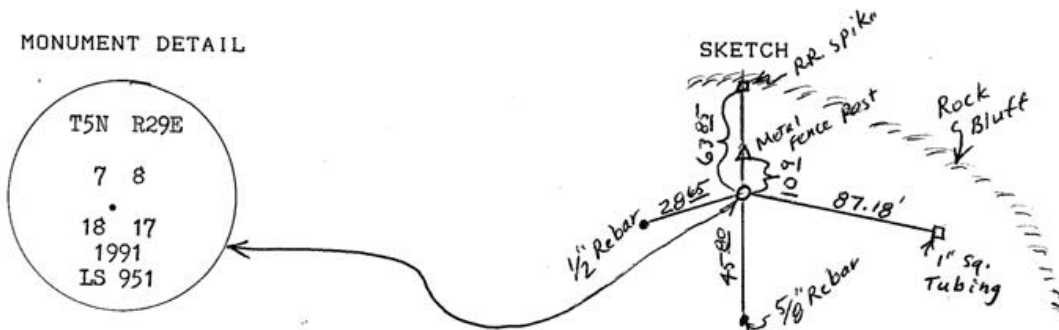
PREVIOUS RENEWALS/SURVEYS, ETC.

Originally surveyed in 1861 by Davenport under Contract #101. He set post, made mound and drove charred stake. Rock Bluff called 1 chain North and 2 1/2 chains West.

MONUMENTS & ACCESSORIES FOUND: Condition and Source

Found neat mound of stone 2 ft. diameter, 10 in. high.

MONUMENT DETAIL



MONUMENT SET (PROCEDURES AND DESCRIPTION)

Removed center stone and poured 6" of concrete and set 2 1/2" Brass Disc, stamped as above. See Co. Survey #91-058-B.

NEW ACCESSORIES From which

- A RR spike stamped #951 Bears. N0° 03' 10"E 63.85 feet, (IN CONC.)
- A steel fence post with witness sign Bears. North 10.9 feet,
- A 5/8" x 30" rebar with Alum. tag #951 Bears. S0° 03' 10"W 45.80 ft. (8" above surface.),
- A 1/2" x 24" rebar with Alum. tag #951 Bears S75° 22'E 28.65 feet.
- A 1" x 30" square steel tubing stamped 951 on West side Bears. S 79° 45' E 87.18 feet.

LOCATION & COMMENTS

Corner lies 66 feet from edge of Rock Bluff, South of Columbia River and West of "Box Canyon".

SURVEYOR'S SEAL

COMPASS DEC.
 FIRM EDWARDS SURVEYING
 P.O. BOX 763, HERMISTON,
 OREGON, 97838
 PARTY CHIEF D. EDWARDS
NOTES
 WITNESS S. BENEFIT

REGISTERED
 PROFESSIONAL
 LAND SURVEYOR

G. Dennis Edwards

OREGON
 JULY 16, 1971
 G. DENNIS EDWARDS
 951

RECEIVED BY

Umatilla County Surveyor
 Date 10-91
 Rec'd By [Signature]
 No. 91-91-R