

OREGON CORNER RESTORATION FORM

SECTION: 22 TOWNSHIP: 5N

RANGE: 29E

P-13

COUNTY: UMATILLA

DATE: 12/05

CORNER DESIGNATION

W 1/4 Section 22

- CONDITION REPORT ONLY
- NOT FOUND
- RENEWED
- UNRECORDED
- SURVEYED IN
- REFERENCED OUT

PREVIOUS RENEWALS/SURVEYS ETC.

Originally surveyed by Davenport under Contract # 101 in 1861. He set post and made mound.
In 1983 Edwards set a 1"x30" iron pipe with a 2 3/8" brass cap.
In 1983 someone moved Edwards monument.

MONUMENTS AND ACCESSORIES FOUND: CONDITION AND SOURCE

Found 2 3/8 brass cap facing South. It bears N 33° 24' 16" W 4.15'

MONUMENT DETAIL

T5NR29E
1/4
21 | 22
2005
951

OREGON STATE PLANE COORDINATES, NORTH ZONE, NAD 83(91) INT. FEET:

817163.45
8537559.50

MONUMENT SET (PROCEDURES AND DESCRIPTION)

By retracing Edwards' 1983 survey for Nash I set a 1"x30" iron pipe in concrete 3" below the surface stamped as above.

NEW ACCESSORIES FROM WHICH

- A 5/8" x 30" Iron Rebar with plastic cap #951 bears N 82° 37' 37" E 15.34'
- A 5/8" x 30" Iron Rebar with plastic cap #951 bears N 88° 17' 47" W 43.33'
- A 5/8 x 30 Iron Rebar with plastic cap #951 bears S 6° 13' 46" W 42.74

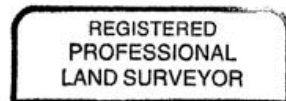
LOCATION AND COMMENTS

Corner lies approximately 350' South of the intersection of hwy 730 with Salmon Point Drive.

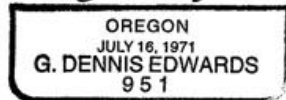
SURVEYOR'S SEAL

FIRM: EDWARDS SURVEYING LLC
PO BOX 763 - HERMISTON OR 97838

PARTY CHIEF: R. SMITH
WITNESS: J. JOSEPH



G. Dennis Edwards



RENEWS 12/31/05