

OREGON CORNER RESTORATION FORM

SECTION: 23 TOWNSHIP: 5N

RANGE: 29E

P-21

COUNTY: UMATILLA

DATE: 12/05

CORNER DESIGNATION

E1/4 Section 23

- CONDITION REPORT ONLY**
- NOT FOUND**
- RENEWED**
- UNRECORDED**
- SURVEYED IN**
- REFERENCED OUT**

PREVIOUS RENEWALS/SURVEYS ETC.

Originally surveyed by Davenport under Contract # 101 in 1861. He set post and made mound.

MONUMENTS AND ACCESSORIES FOUND: CONDITON AND SOURCE

Nothing found

MONUMENT DETAIL

T5NR29E
 1/4
 23 | 24
 2005
 951

OREGON STATE PLANE COORDINATES, NORTH ZONE, NAD 83(91) INT. FEET:

817369.92
 8548153.05

MONUMENT SET (PROCEDURES AND DESCRIPTION)

By single proportion I set a 1" Iron pipe in concrete with a 2 3/8" brass cap stamped as above 4" above the surface.

NEW ACCESSORIES FROM WHICH

- A 5/8" x 30" Iron Rebar with plastic cap #951 bears N 0° 46' 30" W 105.98'
- A 5/8" x 30" Iron Rebar with plastic cap #951 bears N 3° 04' 52" W 34.00'
- A 5/8" x 30" Iron Rebar with plastic cap #951 bears S 2° 17' 19" W 53.00'
- A 5/8" x 30" Iron Rebar with plastic cap #951 bears S 0° 56' 15" W 126.01'

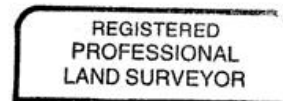
LOCATION AND COMMENTS

Corner lies about halfway between U.P.P.R. & a large concrete irrigation canal approximately 1.4 miles Southwest of Cold Springs highway.

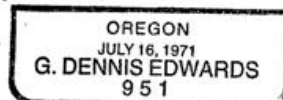
SURVEYOR'S SEAL

**FIRM: EDWARDS SURVEYING LLC
 PO BOX 763 - HERMISTON OR 97838**

**PARTY CHIEF: R. SMITH
 WITNESS: J. JOSEPH**



G. Dennis Edwards



RENEWS 12/31/05