

OREGON COUNTY RESTORATION FORM

Section 22, 23, 26, 27 Township 5N Range 30E
 County Umatilla Date: 08-02-2006

Corner Designation: 5N30E R17

Condition Report Only
 Not Found
 Remonumented
 Unrecorded
 Surveyed In
 Referenced Out

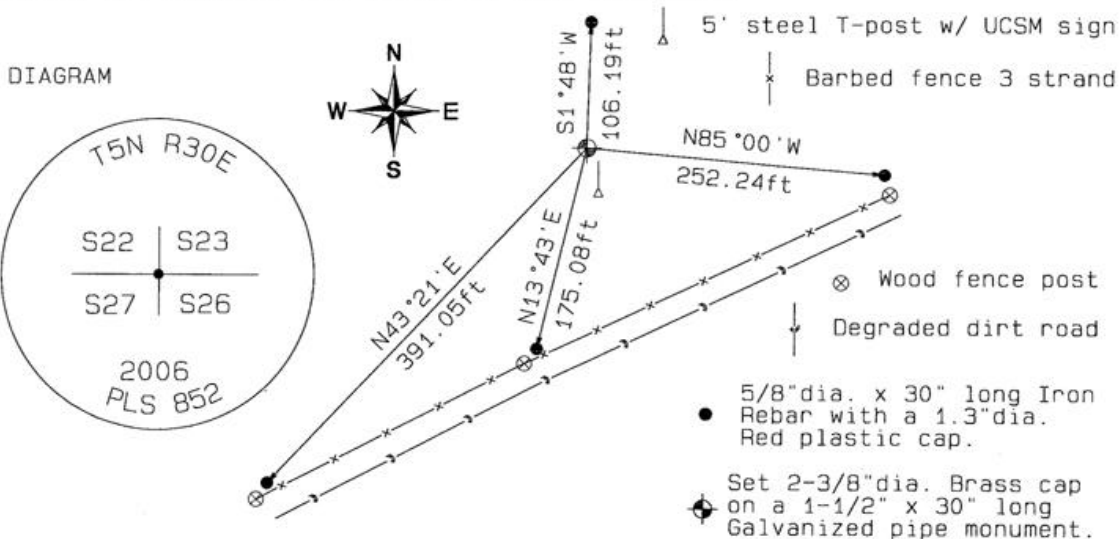
Previous Renewals / Surveys, etc.

12-1861 S. Payne - Subdv (100) "Set charred stake with mound trench and pits as per instrct's for corner to sec's 22, 23, 26, 27"

08-1934 ODOT J.A. Phelps (Dwg 5B-1-1) From a point at a PI on HWY 37. "4125.2' to Sec. Cor. (Fc. Cor.) {R17} then 88°37' Rt. 2715' to 1/4 Cor. (Fc. Cor.)" {R19}

08-1940 ODOT (Dwg 5B-29-11) Corner indicated on map "FC" with no ties

Monument and Accessories Found: (condition and source)
 Searched for and did not find charred stake, fence corner or post.
 Found barb wire fencing in the ground. Found wood fence post
 West of the location. Set corner to ODOT distances.



MONUMENT (S) AND ACCESSORIES SET (Procedures and Description)

Set a 2-3/8" dia. Brass Capped monument (stamped as shown) on a 1-1/4" ID x 30" long galvanized pipe 3" above the ground surface.
 Set a 5 ft steel T-post with a Umatilla County Survey Marker sign facing North 5 feet West of the monument.

REFERENCES SET:

Set four (5/8" dia x 30" long Iron rebar with a 1.3" dia. Red plastic cap) to the bearings and distances from monument shown above in the sketch.

Made GPS tie to TRI Stations	Oregon State Plane Coord. - North Zone
LAURILA RESET RB 1379 and	Northing 814990.72
WALLS RB 1396	Easting 8574632.55
Latitude 45°53'34.26323"N	Ortho Height 933.38
Longitude 119°02'12.77904"W	Ellipsoidal Height 864.11
NAD 83 (1991)	

Location and Comments	Compass Declination	Surveyors Seal
	18°E	

From the junction of HWY37 and Kosmos Road (County rd 1172) proceed East 977 feet on HWY 37. Thence Northwest 782 feet along field access road past farm house and over cold springs creek. Thence Northeast 0.67 miles on the field access road to the gate. Thence West through the gate. Thence 885 ft S 82°40'W to the brass cap section corner monument.

REGISTERED
 PROFESSIONAL
 LAND SURVEYOR

RECEIVED BY:

Firm / Agency

David L. Haddock

Date 02-07
 Rec'd By: *DH*
 No.: *07-201-R*

Haddock Surveying
 P. O. Box 1574
 Pendleton, OR 97801
 (541) 276-2174

OREGON
 JULY 12, 1968
 DAVID L. HADDOCK
 852

RENEWS 6-30-07