

OREGON CORNER RESTORATION FORM

Section 26.27 Township 5N Range 30E
 County Umatilla Date: 09-01-2006

Corner Designation: 5N30E T17

_____	Condition Report Only
<u> X </u>	Not Found
_____	Remonumented
_____	Unrecorded
<u> X </u>	Surveyed In
<u> X </u>	Referenced Out

Previous Renewals / Surveys, etc.

12-1861 S.Payne - Subdv (100) "Set charred stake with mound trench and pits as per instrct's for 1/4 sec corner"

08-1934 ODOT J.A.Phelps (Dwg 5B-1-1) Marked on map "1/4 Cor"with no tie.

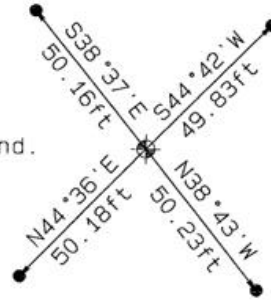
Monument and Accessories Found: (condition and source)
 Searched for and did not find charred stake, fence corner or post.
 Set corner to porportioned to the 1861 S.Payne Subdivision survey.
 Plowed field.



DIAGRAM



Buried all monuments 24" below surface of the ground.



- ◆ Set 2-3/8"dia. Brass cap on a 1-1/2" x 30" long Galvanized pipe monument.
- 5/8"dia. x 30" long Iron Rebar with a 1.3"dia. Red plastic cap.

MONUMENT (S) AND ACCESSORIES SET (Procedures and Description)

Set a 2-3/8"dia.Brass Capped monument (stamped as shown) on a 1-1/4"ID x 30"long galvanized pipe 24" below the ground surface.

REFERENCES SET:

Set four (5/8" dia x 30" long Iron rebar with a 1.3" dia. Red plastic cap) to the bearings and distances from monument shown above in the sketch.
 Set all monuments 24" below ground surface in plowed field.

Made GPS tie to TRI Stations	Oregon State Plane Coord. - North Zone
LAURILA RESET RB 1379 and	Northing 812362.12
WALLS RB 1396	Easting 8574685.44
Latitude 45 °53'08.30766"N	Ortho Height 943.25
Longitude 118 °02'12.70474"W	Ellipsoidal Height 873.90
NAD 83 (1991)	

Location and Comments	Compass Declination	Surveyors Seal
	18 °E	

From the junction of HWY37 and Kosmos Road (County rd 1172) proceed East 977 feet on HWY 37. Thence Northwest 782 feet along field access road past farm house and over Cold Springs creek. Thence Northeast 0.59 miles on the field access road to top of the flat on the road dog-leg. Thence .38 miles at a bearing of S25°W in the plowed field to the buried corner. Use GPS to general area and magnetic detector to locate corner/ RM's.

REGISTERED
 PROFESSIONAL
 LAND SURVEYOR

RECEIVED BY:

Firm / Agency

Date 02-07
 Rec'd By: *DHL*
 No.: 07-204-R

Haddock Surveying
 P. O. Box 1574
 Pendleton, OR 97801
 (541) 276-2174

David L. Haddock
 OREGON
 JULY 12, 1968
 DAVID L. HADDOCK
 852

RENEWS 6-30-07