

OREGON CORNER RESTORATION FORM

Section 25.36 Township 5N Range 30E
 County Umatilla Date: 10-14-2006 Condition Report Only
 Corner Designation: 5N30E V23 Not Found
 Remonumented
 Unrecorded
 Surveyed In
 Referenced Out

Previous Renewals / Surveys, etc.

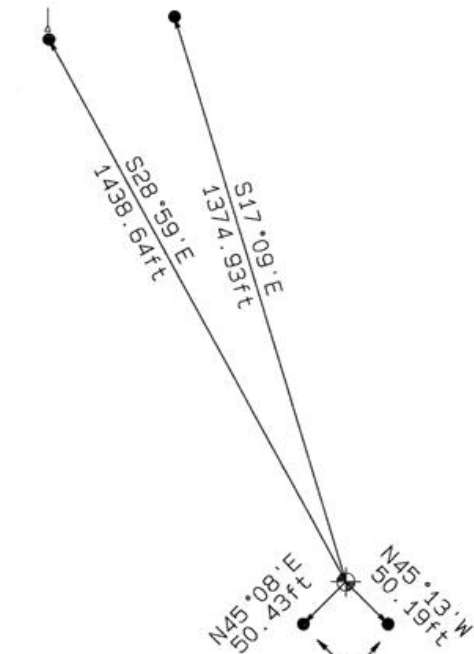
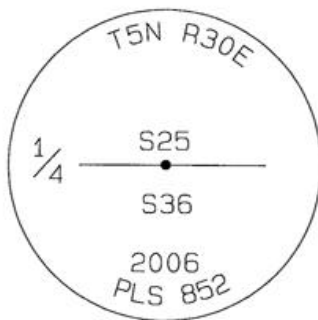
08-1861 S.Payne - Subdv (100) "set charred stake with mound trench and pits as per insts for 1/4 sec corner."

08-1934 ODOT J.A.Phelps (Dwg 5B-1-1) Tie to found "Fc.Cor." of 5N30E T21 to found (V21) "2730.0' to Sec.Cor (Old Fc.Cor.) then 89°56' Lt. 5229.8' to Sec.Cor. (Fc.Cor)" (V25).

Monument and Accessories Found: (condition and source)

Searched for and did not find charred stake, or fence corner or post. Plowed field.

DIAGRAM



↓ 5' steel T-post w/UCSM sign

- 5/8" dia. x 30" long Iron Rebar with a 1.3" dia. Red plastic cap.
- Set 2-3/8" dia. Brass cap on a 1-1/2" x 30" long Galvanized pipe monument.
- Buried 24" below surface

MONUMENT (S) AND ACCESSORIES SET (Procedures and Description)
 Set a 2-3/8" dia. Brass Capped monument (stamped as shown) on a 1-1/4" ID x 30" long galvanized pipe 24" below the ground surface.
 Set a 5' steel T-post with a Umatilla County Survey Marker sign facing North toward Hwy 37.

REFERENCES SET:

Set four (5/8" dia x 30" long Iron rebar with a 1.3" dia. Red plastic cap) to the bearings and distances from monument shown above in the sketch.

Made GPS tie to TRI Stations	Oregon State Plane Coord. - North Zone
LAURILA RESET RB 1379 and	Northing 809821.86
WALLS RB 1396	Easting 8582709.16
Latitude 45°52'41.78266"N	Ortho Height 1069.26
Longitude 119°00'19.96104"W	Ellipsoidal Height 1000.10
NAD 83(1991)	

Location and Comments Compass Declination Surveyors Seal
 18°E

Proceed from the junction of HWY 37 and South Cold Springs Highway Southeast on S. Cold Springs Hwy (Umatilla County Rd # 850) approximately 0.28 miles to the South field access road, proceed South through the entrance following the field access road 0.56 miles to the field corner at RM's and T-Post.

REGISTERED
 PROFESSIONAL
 LAND SURVEYOR

RECEIVED BY:

Firm / Agency

David L. Haddock

Date 02-07
 Rec'd By: *DH*
 No.: 07-11-B

Haddock Surveying
 P. O. Box 1574
 Pendleton, OR 97801
 (541) 276-2174

OREGON
 JULY 12, 1968
 DAVID L. HADDOCK
 852

RENEWS 6-30-07