

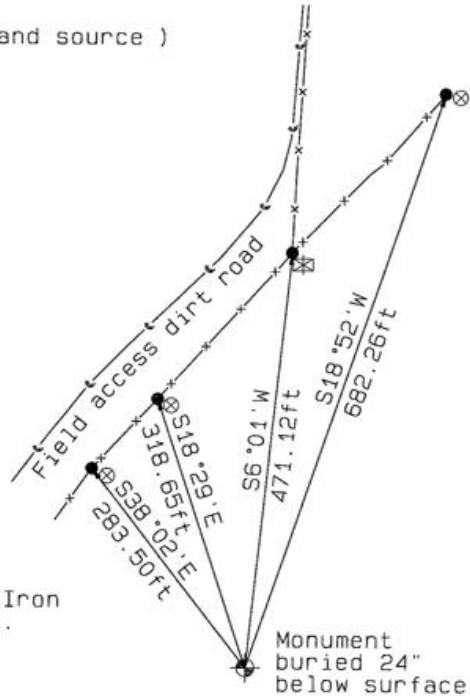
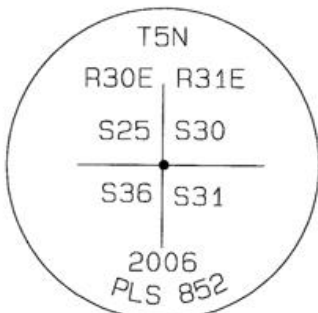
OREGON CORNER RESTORATION FORM

Section 25,36 Township 5N Range 30E  
 County Umatilla Date: 05-08-2006 Condition Report Only  
 Corner Designation: 5N30E V25

- Previous Renewals / Surveys, etc.
- 08-1859 D.Thompson GLO (81) "Set post for corner to secs 30, 31, 25 & 36 and build mound of Earth with pits & trench and charcoal as per instructions"
  - 08-1861 S.Payne - Subdv (100) "Intersect Town line 13 links North of post corner to secs 24, 25"
  - 10-1874 N.Walden Subdv (209) "Intersect West boundary of Township 80 lks South of the Corner."
  - 08-1934 ODOT J.A.Phelps (Dwg 5B-1-1) Tie to found "Fc.Cor." of 5N30E T21 to found (V21) "2730.0' to Sec.Cor (Old Fc.Cor.) then 89°56' Lt. 5229.8' to Sec.Cor. (Fc.Cor)" (V25).
  - 05-1974 D.Krumbein (I-25-B) Computed point indicated on map.
  - 06-1974 D.Krumbein (I-24-B) Computed point indicated on map.
  - 06-1974 D.Krumbein (I-167-B) Computed point indicated on map.

Monument and Accessories Found: ( condition and source )

DIAGRAM



Set 2-3/8" dia. Brass cap on a 1-1/2" x 30" long Galvanized pipe monument.

Field access road

Wire Fence line

Wood fence post

5/8" dia. x 24" long Iron Rebar with a 1.3" dia. Red plastic cap.  
 RR Tie posts.

Monument buried 24" below surface

MONUMENT(S) AND ACCESSORIES SET (Procedures and Description)

Set a 2-3/8" dia. Brass Capped monument (stamped as shown) on a 1-1/4" ID x 30" long galvanized pipe 24" below the ground surface.  
 Set a Umatilla County Survey Marker sign facing West toward the access road.

REFERENCES SET:

Set four (5/8" dia x 30" long Iron rebar with a 1.3" dia. Red plastic cap) to the bearings and distances from monument shown above in the sketch.

Made GPS tie to TRI Stations	Oregon State Plane Coord. - North Zone
LAURILA RESET RB 1379 and	Northing 809876.73
WALLS RB 1396	Easting 8585312.37
Latitude 45°52'41.84677"N	Ortho Height 1030.29
Longitude 118°59'43.15754"W	Ellipsoidal Height 961.19
NAD 83(1991)	

Location and Comments

Compass Declination  
18°E

Surveyors Seal

Proceed from the junction of HWY 37 and South Cold Springs Highway Southeast on S. Cold Springs Hwy (Umatilla County Rd # 850) approximately 0.56 miles to the South field access road, proceed South on the field access road 780 feet to the "Y" junction. Thence along the West fork approx. 0.28 miles to the UCSM sign on the East side fence post.

REGISTERED PROFESSIONAL LAND SURVEYOR

RECEIVED BY:

Firm / Agency

David L. Haddock

Date 02-07  
 Rec'd By: *D.H.H.*  
 No.: 07-11-B

Haddock Surveying  
 P. O. Box 1574  
 Pendleton, OR 97801  
 (541) 276-2174

OREGON  
 JULY 12, 1968  
 DAVID L. HADDOCK  
 852

RENEWS 6-30-07