

OREGON CORNER RESTORATION FORM

Section 32,33 Township 5N Range 30E  
 County Umatilla Date: 05-08-2006

Corner Designation: 5N30E Z17

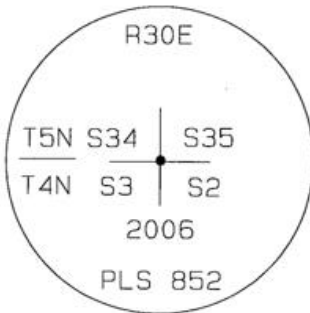
Condition Report Only  
 Not Found  
 Remonumented  
 Unrecorded  
 Surveyed In  
 Referenced Out

Previous Renewals / Surveys, etc.

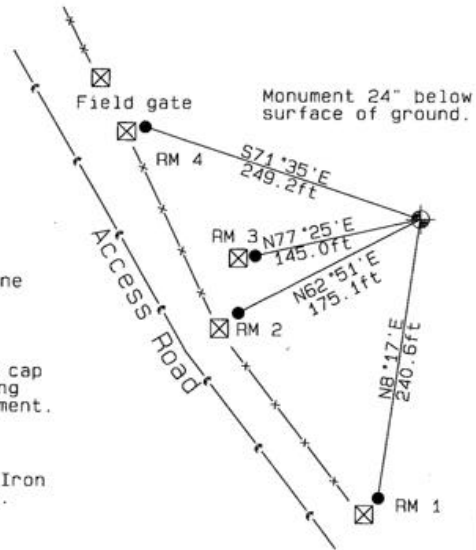
02-1860 H.Maxon/J.Hurd STD PARALLEL (50) "Set post for corner to Sects. 34 & 35 in mound of earth, trench & pits as per instructions."  
 08-1861 D.Payne GLO Subdv (100) "Intersect standard parallel at 46 links West of post corner to secs 2 + 3 T4NR30E and 34 & 35 T5NR30."  
 10-1909 J.Kimbrell Bk2 (296) "the corner to secs 4-5-32 & 33."  
 05-1974 D.Krumbein (I-25-B) Calculated point to intersection

Monument and Accessories Found: ( condition and source )  
 Post not found. Plowed field.

DIAGRAM



- Access Road centerline
- Wire Fence line
- Set 2-3/8" dia. Brass cap on a 1-1/2" x 30" long Galvanized pipe monument.
- Wood fence post
- 5/8" dia. x 24" long Iron Rebar with a 2.5" dia. Orange Plastic cap.



MONUMENT (S) AND ACCESSORIES SET (Procedures and Description)

Set a 2-3/8" dia. Brass Capped monument (stamped as shown) on a 1-1/4" ID x 30" long galvanized pipe 24" below ground surface.  
 Set a Umatilla County Survey Marker sign on RM3 (2ft wood post) facing NorthEast toward the monument.

REFERENCES SET:

Set four (5/8" dia x 24" long Iron rebar with a 2.5" dia. Orange Plastic cap) to the bearings and distances from monument shown above in the sketch.

Made GPS tie to TRI Stations	Oregon State Plane Coord. - North Zone
LAURILA RESET RB 1379 and	Northing 804461.66
WALLS RB 1396	Easting 8574809.06
Latitude 45°51'50.163163"N	Ortho Height 897.45
Longitude 119°02'12.952395"W	Ellipsoidal Height 828.19
NAD 83(1991)	

Compass Declination  
 18°E

Location and Comments

Proceed 1.1 miles South on Umatilla County Road 1172 (KOSMOS ROAD). Turn South along access road East. Thence 0.15 miles to the North Access road as shown on sketch.

Surveyors Seal

REGISTERED  
 PROFESSIONAL  
 LAND SURVEYOR

*David L. Haddock*

OREGON  
 JULY 12, 1968  
 DAVID L. HADDOCK  
 852

RENEWS 6-30-07

RECEIVED BY:

Firm / Agency

Date: 05-06  
 Rec'd By: \_\_\_\_\_  
 No.: 06-263-C

Haddock Surveying  
 P. O. Box 1574  
 Pendleton, OR 97801  
 (541) 276-2174