

OREGON COUNTY RESTORATION FORM

Section 30, 31 Township 5N Range 31E
 County Umatilla Date: 05-08-2006 Condition Report Only
 Corner Designation: 5N31E V1

Not Found
 Remonumented
 Unrecorded
 Surveyed In
 Referenced Out

Previous Renewals / Surveys, etc.

08-1859 D.Thompson GLO (81) "Set post for corner to secs 30, 31, 25 & 36 and build mound of Earth with pits & trench and charcoal as per instructions"

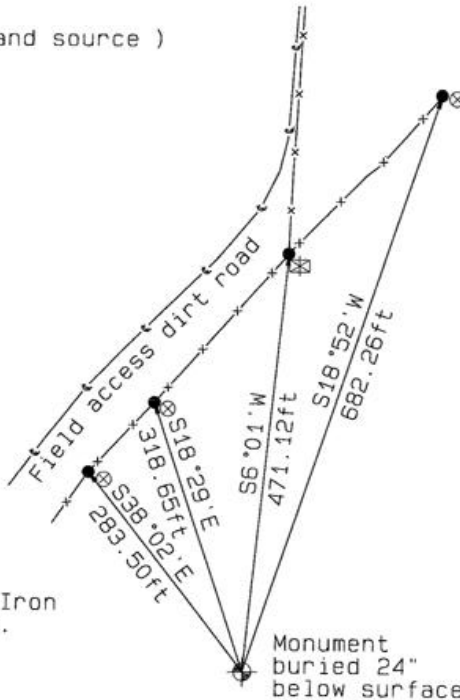
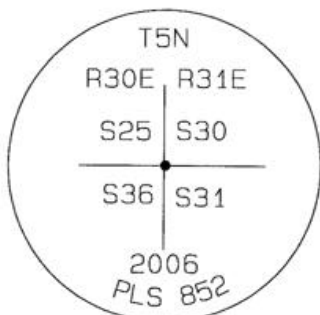
08-1861 S.Payne - Subdv (100) "Intersect Town line 13 links North of post corner to secs 24, 25"

10-1874 N.Walden Subdv (209) "Intersect West boundary of Township 80 lks South of the Corner."

08-1934 ODOT J.A.Phelps (Dwg 5B-1-1) Tie to found "Fc.Cor." of 5N30E T21 to found (V21) "2730.0' to Sec.Cor (Old Fc.Cor.) then 89°56' Lt. 5229.8' to Sec.Cor. (Fc.Cor)" (V25).
 (I-25-B) Computed point indicated on map.
 05-1974 D.Krumbein (I-24-B) Computed point indicated on map.
 06-1974 D.Krumbein (I-167-B) Computed point indicated on map.

Monument and Accessories Found: (condition and source)

DIAGRAM



Set 2-3/8" dia. Brass cap on a 1-1/2" x 30" long Galvanized pipe monument.

Field access road

Wire Fence line ● 5/8" dia. x 24" long Iron Rebar with a 1.3" dia. Red plastic cap.

Wood fence post ⊠ RR Tie posts.

Monument buried 24" below surface

MONUMENT(S) AND ACCESSORIES SET (Procedures and Description)

Set a 2-3/8" dia. Brass Capped monument (stamped as shown) on a 1-1/4" ID x 30" long galvanized pipe 24" below the ground surface.
 Set a Umatilla County Survey Marker sign facing West toward the access road.

REFERENCES SET:

Set four (5/8" dia x 30" long Iron rebar with a 1.3" dia. Red plastic cap) to the bearings and distances from monument shown above in the sketch.

Made GPS tie to TRI Stations LAURILA RESET RB 1379 and WALLS RB 1396
 Latitude 45°52'41.84677"N
 Longitude 118°59'43.15754"W
 NAD 83(1991)

Oregon State Plane Coord. - North Zone
 Northing 809876.73
 Easting 8585312.37
 Ortho Height 1030.29
 Ellipsoidal Height 961.19

Location and Comments

Compass Declination 18°E

Surveyors Seal

Proceed from the junction of HWY 37 and South Cold Springs Highway Southeast on S. Cold Springs Hwy (Umatilla County Rd # 850) approximately 0.56 miles to the South field access road, proceed South on the field access road 780 feet to the "Y" junction. Thence along the West fork approx. 0.28 miles to the UCSM sign on the East side fence post.

RECEIVED BY:

Firm / Agency

Date 02-07

Rec'd By:

No.:

07-11-B

Haddock Surveying
 P. O. Box 1574
 Pendleton, OR 97801
 (541) 276-2174

REGISTERED
PROFESSIONAL
LAND SURVEYOR

David L. Haddock

OREGON
JULY 12, 1968
DAVID L. HADDOCK
852

RENEWS 6-30-07