

OREGON CORNER RESTORATION FORM

Section 29 Township 5N Range 31E  
 County Umatilla Date: November 21st, 2023

Corner Designation: 5N31V9

Corner to Sections 28, 29, 32, and 33, T5N, R31E, W.M.,  
 Umatilla County, Oregon.

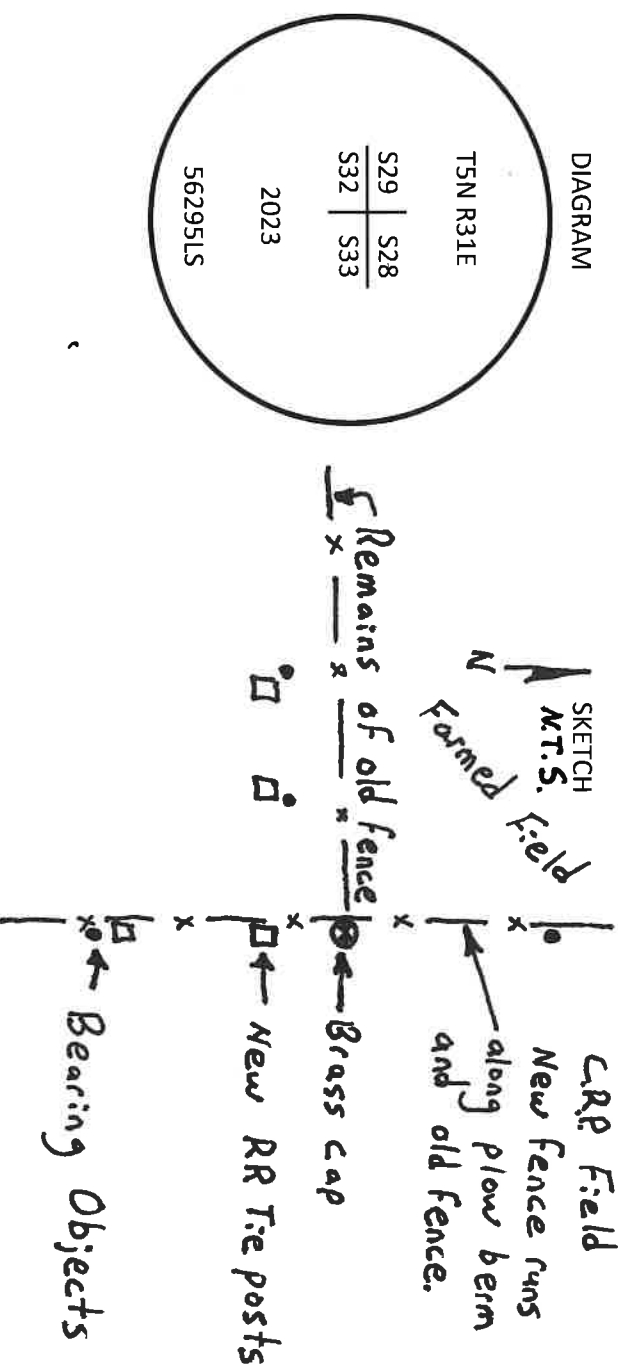
Condition report only  
 Not Found   
 Remonumented   
 Unrecorded   
 Surveyed In   
 Referenced Out

Previous Renewals, Surveys, etc...

This corner was originally set by Nicholas O. Walden under Contract No. 209, Dated July 6th, 1874. His Record reads: Set basalt stone 18x6x6 gins. in ground, for Cor. To Secs. 28, 29, 32, & 33. ODOT map 5B-1-1 dated August of 1934 shows a tie to the corner from centerline station 612+42.4 P.C.

Monument and accessories found: (condition and source)

Found the remains of fences running north, south and west. A new fence has been built in this location running north and south on top of a distinct plow berm. The remains of the old fence corner are confirmed by the tie to the centerline of Highway 37 as per map 5B-1-1.



MONUMENT(S) AND ACCESSORIES SET (Procedures and Description)

At the corner position I set a 2 1/2" brass cap on a 1 1/2" x 30" galvanized iron pipe 30 inches in the ground. The cap is stamped as shown in the diagram above and flush with the surface.

For references I set four 5/8" by 24" iron rebars with 1.25" orange plastic caps stamped WTS and 56295LS as described below:

- An iron rebar bears N00°48'30"W 20.77 feet with the top set 6 inches below the surface;
- An iron rebar bears S01°20'10"E 21.18 feet with the top set 6 inches below the surface;
- An iron rebar bears S71°14'21"W, 16.00 feet with the top set 6 inches below the surface;
- An iron rebar bears S80°27'43"W, 24.87 feet with the top set 6 inches below the surface;
- A Umatilla County monument sign is attached to the railroad tie fence post 10 feet south of the brass cap.

The monument was reset and bearing objects tied using a Trimble R8S RTK GPS system.

Location and comments:  
 The cap is approximately  
 435 feet north of Highway 37.

RECEIVED BY:

Umatilla County Surveyor  
 Date: 12/12/23  
 Rec'd By: CT  
 No. 23-116-R

Compass Declination  
 Firm / Agency  
 Witness Tree Surveying  
 Address  
 P.O. Box G  
 Pilot Rock, OR 97868  
 Party Chief  
 Stephen K. Haddock

REGISTERED  
 PROFESSIONAL  
 LAND SURVEYOR

Surveyor's Seal  
 OREGON  
 JULY 9, 2001  
 STEPHEN K. HADDOCK  
 56295LS

RENEWALS: 6-30-25