

OREGON CORNER RESTORATION FORM

Section: 31
Township: 5 North
Range: 33 East of the Willamette Meridian
County: Umatilla
Date: 01/30/02

Corner Indexing Information: Township 5N Range 33E Corner Code Z-5 (Willamette Meridian)
Additional Identifier: (e.g. BLM designation for the corner, street intersection, plat name, block, lot, etc.)
Southeast corner Section 31.

Oregon Plane Coordinates: N: 805536.474 E: 8654321.130
Zone: North Order: second Datum: NAD83-91 Convergence: 1°15'32.2" Scale Factor: 0.99987739

Previous Renewals/Surveys, etc.:

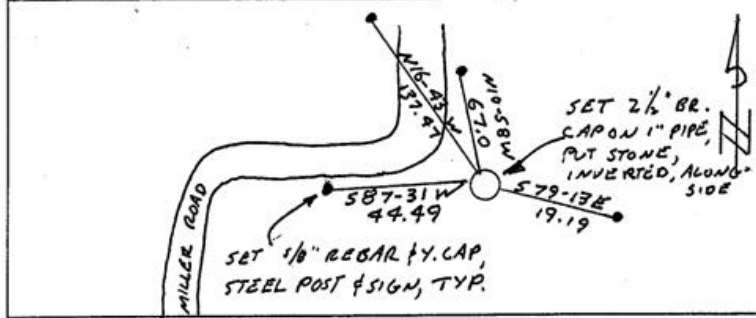
Corner was originally set by Odell and Lewis in 1866 as a post, mound and pits, per contract no. 110. This is a standard corner common to Sections 31 and 32 only. According to the field notes, the closing corner is 6.84 chains West.

No other history.

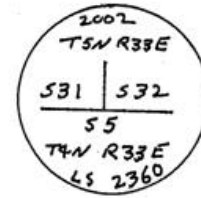
Monument(s) & Accessories Found (Condition & Source):

Found a 4"x 6"x 10" white stone with chiseled "x". A forked locust post and a 6" pipe are erected alongside the stone.

Monument Set (Procedures & Description):



Monument Detail:

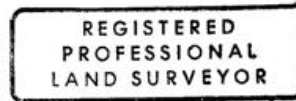


Location & Comments:

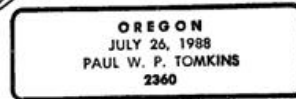
Compass Declination:
19° East

Surveyor's Seal

Firm/Agency: Tomkins Land Surveying, Inc.
20 E. Poplar, Suite 204
Walla Walla WA 99362



Paul W. Tomkins



*renews 6/30/02
2/11/03*

Party Chief: PWPT
Notes:
Witness: JLD

RECEIVED BY

Umatilla County Surveyor
Date 2-03
Rec'd By KK
No. 03-30-9